

### PROJECT NAME:

Location:	Approval:
Engineer:	Date:
Submitted to:	Construction:
Submitted by:	Unit #:
Reference:	Drawing #:

### FEATURES AND BENEFITS

#### New panel design

This model features a stylish flat panel with fresh white color for a new sophisticated appearance.

The flat flaps close entirely when the unit is not operating and there are no air intake grilles visible.

#### Individual Airflow Direction Control \*1

Airflow direction can be individually adjusted for each air discharge outlet to deliver optimal air distribution.

\*1. Applicable when wired remote controller BRC1E63 is used.

#### Switchable fan speed: 5 steps and Auto

Control of airflow rate has been improved from 3-step to 5-step. Auto airflow rate is newly available.

#### Suitable for high ceilings

Even in spaces with high ceilings maximum 3.5 m, a comfortable airflow is carried down to the floor level.

#### Energy saving: Reduction of energy consumption

Power consumption is significantly reduced by specially developed small tube heat exchanger and DC fan motor.

#### Enhanced functions from various aspects such as maintenance

The flap parts are easy to clean because it is hard to condensate and get dirty.

Drain pump is equipped as standard accessory with 850 mm lift.

Check contamination in drain pan by simply remove suction grille and panel. Equipped with long life filter which requires only 1-year maintenance interval.

Adjuster pockets mount at four corners of the unit enable to adjust the main unit without removing the panel.

An antibacterial treatment that uses silver ions has been applied to the drain pan, preventing the growth of slime, mould and bacteria that cause blockages and odours. (The lifespan of a silver ion cartridge depends on the usage environment, but should be changed once every two to three years.)

### EXTERNAL APPEARANCE



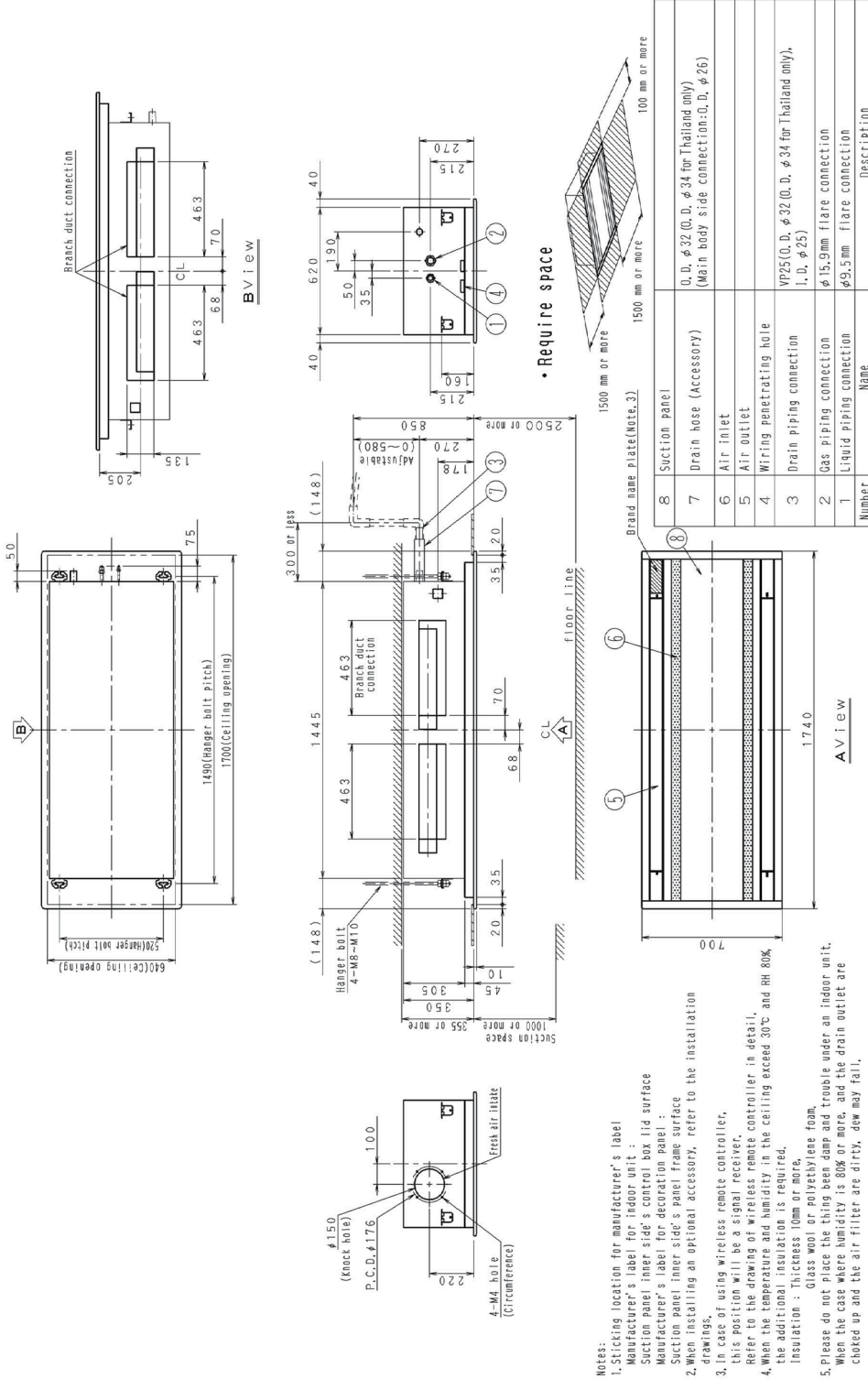
R-410A

### SPECIFICATIONS

Model		FXCQ125AVM		
*1 Power supply		1 phase, 220-240/220-230 V, 50/60 Hz		
*2 *5 Cooling capacity		kcal/h	12,000	
		Btu/h	47,800	
		kW	14.0	
*3 *5 Heating capacity		kcal/h	13,800	
		Btu/h	54,600	
		kW	16.0	
Power input	Cooling	kW	0.149	
	Heating	kW	0.146	
Casing / Colour		Galvanized steel plate		
Dimensions: (H×W×D)		mm	305×1,445×620	
Coil (Cross fin coil)	Rows × Stages × Fin pitch	mm	(3×16×1.2)×2	
	Face area	m <sup>2</sup>	2×0.320	
Fan	Model		EHDS14BDK / EHDS14CDK	
	Type		Turbo fan	
	Motor output × Number of units		W	106+106
	Airflow rate (H/HM/M/ML/L)		m <sup>3</sup> /min	32/29.5/27.5/25/22.5
			l/s	533/492/458/417/375
			cfm	1,130/1,041/971/883/794
Drive		Direct drive		
Temperature control		Microprocessor thermostat for cooling and heating		
Piping connections	Liquid pipes	mm	φ9.5 (Flare connection)	
	Gas pipes	mm	φ15.9 (Flare connection)	
	*4 Drain pipe	mm	VP25 (External dia. 32) Internal dia. 25	
Mass		kg	38	
*6 Sound pressure level (H/HM/M/ML/L)		dB(A)	46.0/44.0/42.0/40.0/38.0	
Safety devices		Fuse		
Refrigerant control		Electronic expansion valve		
Decoration panels (Option)	Model		BYBCQ125CF	
	Panel colour		Fresh White (6.5Y9.5/0.5)	
	Dimensions: (H×W×D)		mm	55×1,740×700
	Air filter		Resin net (with mould resistance)	
	Mass		kg	13
Standard accessories		Operation manual, Installation manual, Declaration of conformity, Installation pattern paper, Washer for hanger, Metal clamp, Drain hose, Joint insulation materials, Washer clamp, Sealing materials, Clamps, Screws, Insulation piping cover for drain piping		
Drawing No.	Specification		C: 3D117680A	
	Sound level		C: 4D118227A	
<b>Notes:</b> *1. Indoor temp.: 27°CDB, 19°CWB / outdoor temp.: 35°CDB / Equivalent piping length: 7.5 m, level difference: 0 m. *2. Indoor temp.: 20°CDB, 15°CWB / outdoor temp.: 7°CDB, 6°CWB / Equivalent piping length: 7.5 m, level difference: 0 m. *3. Capacities are net, including a deduction for cooling (an addition for heating) for indoor fan motor heat. *4. Anechoic chamber conversion value, measured at a point 1.5 m downward from the unit center. During actual operation, these values are normally somewhat higher as a result of ambient conditions.				

### DIMENSIONS

Unit: mm



- Notes:**
1. Strictly location for manufacturer's label.  
 Manufacturer's label for indoor unit :  
 Suction panel inner side's control box lid surface  
 Manufacturer's label for decoration panel :  
 Suction panel inner side's panel frame surface
  2. When installing an optional accessory, refer to the installation drawings.
  3. In case of using wireless remote controller, this position will be a signal receiver.  
 Refer to the drawing of wireless remote controller in detail.
  4. When the temperature and humidity in the ceiling exceed 30°C and RH 80%, the additional insulation is required.  
 Insulation : Thickness 10mm or more.  
 Glass wool or polystyrene foam.
  5. Please do not place the thing been damp and trouble under an indoor unit.  
 When the case where humidity is 80% or more, and the drain outlet are choked up and the air filter are dirty, dew may fall.

Number	Name	Description
8	Suction panel	Brand name plate (note. 2)
7	Drain hose (Accessory)	O. D. $\phi$ 32 (O. D. $\phi$ 34 for Thailand only) (Main body side connection: O. D. $\phi$ 26)
6	Air inlet	
5	Air outlet	
4	Wiring penetrating hole	
3	Drain piping connection	VP25 (O. D. $\phi$ 32 (O. D. $\phi$ 34 for Thailand only), I. D. $\phi$ 25)
2	Gas piping connection	$\phi$ 15.9mm flare connection
1	Liquid piping connection	$\phi$ 9.5mm flare connection

3DIT7671A EDMT391908