

PROJECT NAME:

| | |
|---------------|---------------|
| Location: | Approval: |
| Engineer: | Date: |
| Submitted to: | Construction: |
| Submitted by: | Unit #: |
| Reference: | Drawing #: |

FEATURES AND BENEFITS

New panel design

This model features a stylish flat panel with fresh white color for a new sophisticated appearance.

The flat flaps close entirely when the unit is not operating and there are no air intake grilles visible.

Individual Airflow Direction Control *1

Airflow direction can be individually adjusted for each air discharge outlet to deliver optimal air distribution.

*1. Applicable when wired remote controller BRC1E63 is used.

Switchable fan speed: 5 steps and Auto

Control of airflow rate has been improved from 3-step to 5-step. Auto airflow rate is newly available.

Suitable for high ceilings

Even in spaces with high ceilings maximum 3.5 m, a comfortable airflow is carried down to the floor level.

Energy saving: Reduction of energy consumption

Power consumption is significantly reduced by specially developed small tube heat exchanger and DC fan motor.

Enhanced functions from various aspects such as maintenance

The flap parts are easy to clean because it is hard to condensate and get dirty.

Drain pump is equipped as standard accessory with 850 mm lift.

Check contamination in drain pan by simply remove suction grille and panel. Equipped with long life filter which requires only 1-year maintenance interval.

Adjuster pockets mount at four corners of the unit enable to adjust the main unit without removing the panel.

An antibacterial treatment that uses silver ions has been applied to the drain pan, preventing the growth of slime, mould and bacteria that cause blockages and odours. (The lifespan of a silver ion cartridge depends on the usage environment, but should be changed once every two to three years.)

EXTERNAL APPEARANCE



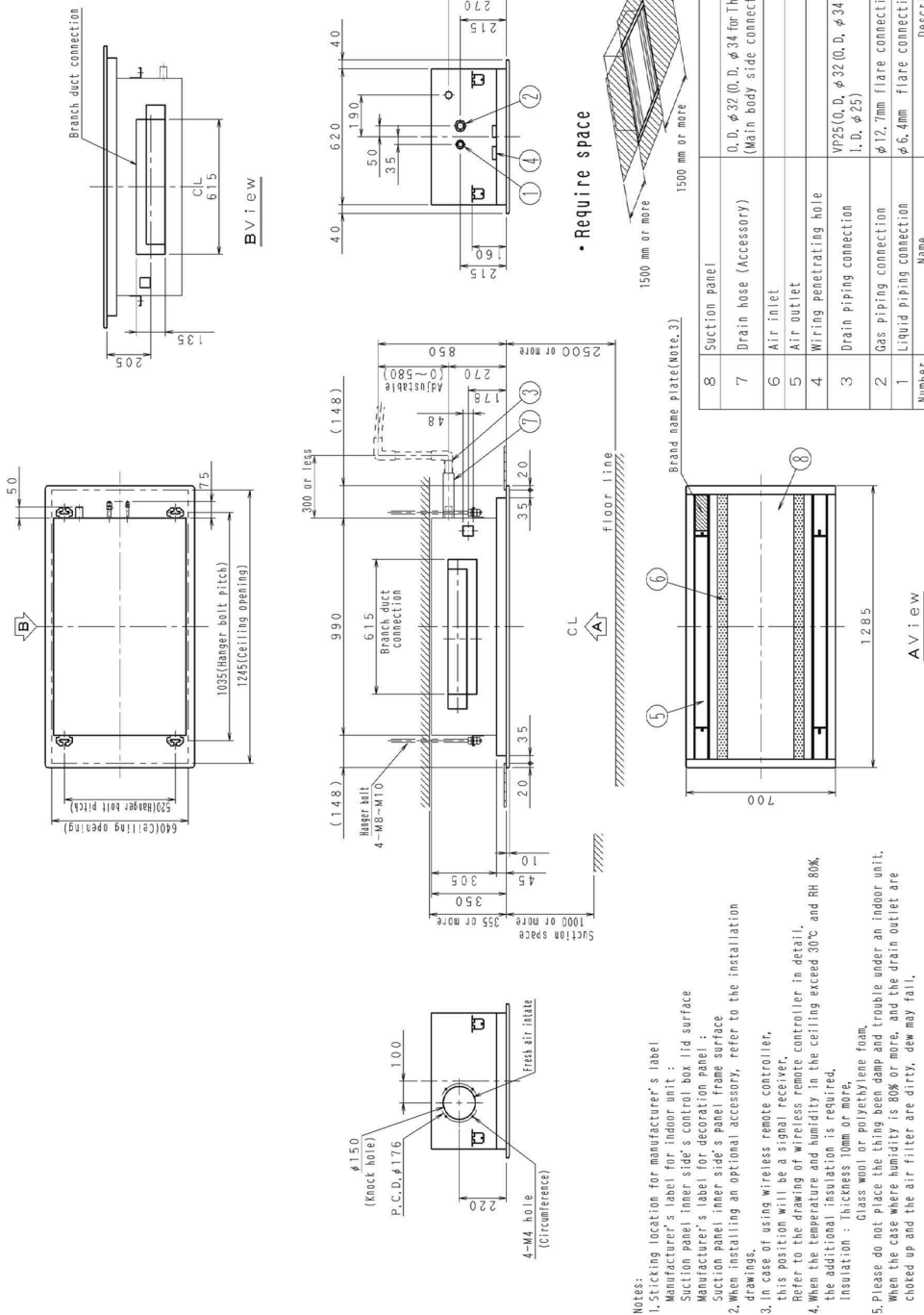
R-410A

SPECIFICATIONS

| Model | | FXCQ50AVM | |
|---|--------------------------------|---|--|
| *1 Power supply | | 1 phase, 220-240/220-230 V, 50/60 Hz | |
| *2 *5 Cooling capacity | | kcal/h | 4,800 |
| | | Btu/h | 19,100 |
| | | kW | 5.6 |
| *3 *5 Heating capacity | | kcal/h | 5,400 |
| | | Btu/h | 21,500 |
| | | kW | 6.3 |
| Power input | Cooling | kW | 0.059 |
| | Heating | kW | 0.056 |
| Casing / Colour | | Galvanized steel plate | |
| Dimensions: (HxWxD) | | mm | 305x990x620 |
| Coil (Cross fin coil) | Rows x Stages x Fin pitch | mm | (2x16x1.2)x2 |
| | Face area | m ² | 2x0.218 |
| Fan | Model | | ARW5207DK |
| | Type | | Turbo fan |
| | Motor output x Number of units | W | 56x1 |
| | Airflow rate (H/HM/M/ML/L) | m ³ /min | 15/14/13/11.5/10.5 |
| | | l/s | 250/233/217/192/175 |
| | | cfm | 530/494/459/406/371 |
| Drive | | Direct drive | |
| Temperature control | | Microprocessor thermostat for cooling and heating | |
| Piping connections | Liquid pipes | mm | φ6.4 (Flare connection) |
| | Gas pipes | mm | φ12.7 (Flare connection) |
| | *4 Drain pipe | mm | VP25 (External dia. 32) Internal dia. 25 |
| Mass | | kg | 22 |
| *6 Sound pressure level (H/HM/M/ML/L) | | dB(A) | 37.0/36.0/35.0/33.0/31.0 |
| Safety devices | | Fuse | |
| Refrigerant control | | Electronic expansion valve | |
| Decoration panels (Option) | Model | | BYBCQ63CF |
| | Panel colour | | Fresh White (6.5Y9.5/0.5) |
| | Dimensions: (HxWxD) | mm | 55x1,285x700 |
| | Air filter | | Resin net (with mould resistance) |
| | Mass | kg | 11 |
| Standard accessories | | Operation manual, Installation manual, Declaration of conformity, Installation pattern paper, Washer for hanger, Metal clamp, Drain hose, Joint insulation materials, Washer clamp, Sealing materials, Clamps, Screws, Insulation piping cover for drain piping | |
| Drawing No. | Specification | C: 3D 117680A | |
| | Sound level | C: 4D 118223A | |
| Notes: *1. Indoor temp.: 27°CDB, 19°CWB / outdoor temp.: 35°CDB / Equivalent piping length: 7.5 m, level difference: 0 m. *2. Indoor temp.: 20°CDB, 15°CWB / outdoor temp.: 7°CDB, 6°CWB / Equivalent piping length: 7.5 m, level difference: 0 m. *3. Capacities are net, including a deduction for cooling (an addition for heating) for indoor fan motor heat. *4. Anechoic chamber conversion value, measured at a point 1.5 m downward from the unit center. During actual operation, these values are normally somewhat higher as a result of ambient conditions. | | | |

DIMENSIONS

Unit: mm



- Notes:
1. Stricking location for manufacturer's label
 Manufacturer's label for indoor unit :
 Suction panel inner side's control box lid surface
 Manufacturer's label for decoration panel :
 Suction panel inner side's panel frame surface
 2. When installing an optional accessory, refer to the installation drawings.
 3. In case of using wireless remote controller, this position will be a signal receiver. Refer to the drawing of wireless remote controller in detail.
 4. When the temperature and humidity in the ceiling exceed 30°C and RH 80%, the additional insulation is required.
 Insulation : Thickness 10mm or more,
 Glass wool or polyethylene foam.
 5. Please do not place the thing been damp and trouble under an indoor unit. When the case where humidity is 80% or more, and the drain outlet are choked up and the air filter are dirty, dew may fall.

| Number | Name | Description |
|--------|--------------------------|---|
| 8 | Suction panel | |
| 7 | Drain hose (Accessory) | O. D. $\phi 32$ (O. D. $\phi 34$ for Thailand only) (Main body side connection-O. D. $\phi 26$) |
| 6 | Air inlet | |
| 5 | Air outlet | |
| 4 | Wiring penetrating hole | |
| 3 | Drain piping connection | V25(O. D. $\phi 32$ (O. D. $\phi 34$ for Thailand only), I. D. $\phi 25$) |
| 2 | Gas piping connection | $\phi 12.7$ mm flare connection |
| 1 | Liquid piping connection | $\phi 6.4$ mm flare connection |

3D117668