

### PROJECT NAME:

Location:	Approval:
Engineer:	Date:
Submitted to:	Construction:
Submitted by:	Unit #:
Reference:	Drawing #:

### FEATURES AND BENEFITS

#### Slim and smooth design suits your shallow ceiling

Only 900 mm in width and 27 kg in weight, this model is suitable to install in limited spaces like drop-ceilings in hotels.

Only 200 mm in height, this model can be installed in rooms with as little as 240 mm in height for the ceiling space between the drop-ceiling and ceiling slab.

Control of the airflow rate can be selected from 3-step control and Auto. Auto airflow rate control can be selected with wired remote controller BRC1E63 and BRC2E61.

Low operation sound level.

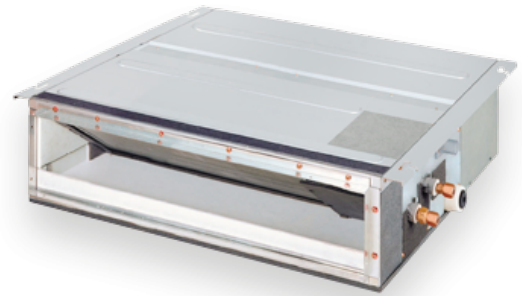
External static pressure selectable by remote controller switching make this indoor unit a very comfortable and flexible model.

FXDQ-PD and FXDQ-ND models are available in two types to suit different installation conditions.

FXDQ-PD/NDVE: with a drain pump (750 mm lift) as a standard accessory.

FXDQ-PD/NDVET: without a drain pump.

### EXTERNAL APPEARANCE



**R-410A**

## SPECIFICATIONS

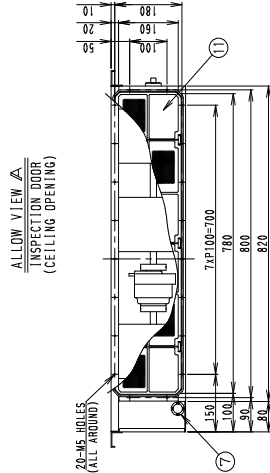
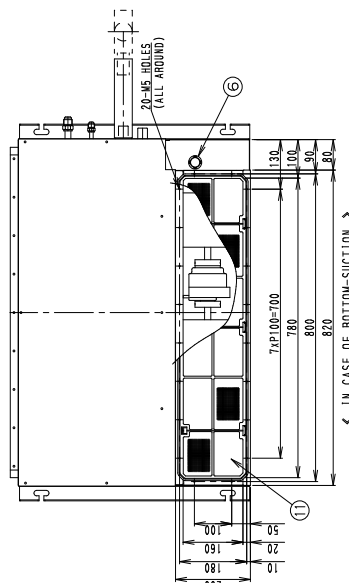
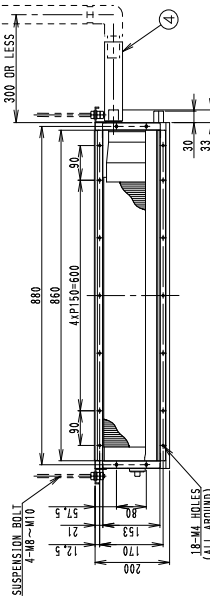
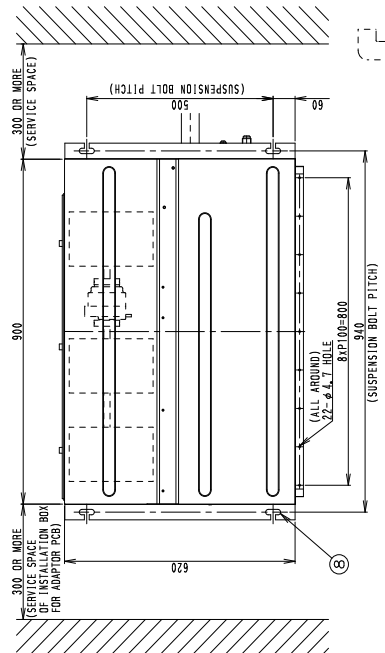
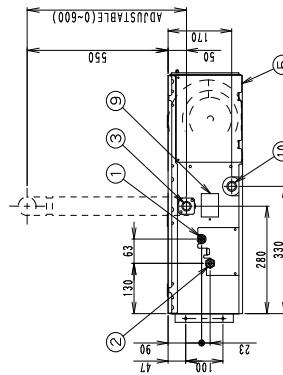
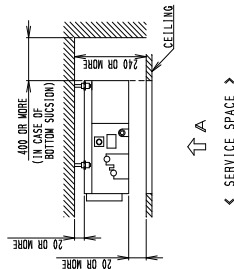
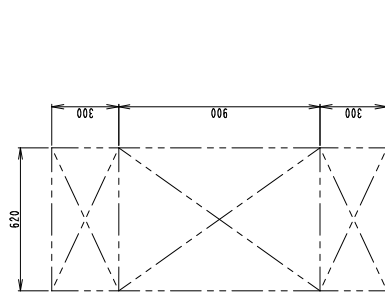
## MODEL: SLIM DUCT / WITH DRAIN PUMP 50/60 Hz - FXDQ40NDVE

Model			FXDQ40NDVE	
Power supply			1 phase, 220-240/220 V, 50/60 Hz	
*1 *3 Cooling capacity			kcal/h	3,900
			Btu/h	15,400
			kW	4.5
*2*3 Heating capacity			kcal/h	4,300
			Btu/h	17,100
			kW	5.0
Power input	Cooling	50 Hz	kW	0.160
		60 Hz	kW	0.182
	Heating	50 Hz	kW	0.147
		60 Hz	kW	0.168
Casing / Colour			Galvanized steel plate	
Dimensions: (HxWxD)			mm	200x900x620
Coil (Cross fin coil)	Rows x Stages x Fin pitch		mm	3x12x1.5
	Face area		m <sup>2</sup>	0.176
Fan	Model			—
	Type			Sirocco fan
	Motor output x Number of units		W	62x1
	Airflow rate (HH/H/L)		m <sup>3</sup> /min	10.5/9.5/8.5
			l/s	175/158/141
			cfm	371/335/300
*4 External static pressure		Pa	44-15	
Drive			Direct drive	
Temperature control			Microprocessor thermostat for cooling and heating	
Sound absorbing thermal insulation material			Foamed polyethylene	
Air filter			Removal / Washable / Mildew proof	
Piping connections	Liquid pipes		mm	φ6.4 (Flare connection)
	Gas pipes		mm	φ12.7 (Flare connection)
	Drain pipe		mm	VP20 (External dia. 26, Internal dia. 20)
Mass			kg	27
*5 Sound pressure level (HH/H/L)			dB(A)	30/28/26
Sound power level (HH/H/L)			dB(A)	58/56/54
Safety devices			Fuse, Thermal protector for fan motor	
Refrigerant control			Electronic expansion valve	
Standard accessories			Operation manual, Installation manual, Drain hose, Sealing pads, Clamps, Washers, Insulation for fitting, Clamp metal, Washer fixing plate, Screws for duct flanges, Air filter	
Drawing No.	Specifications		C: 3D109082B	
	Sound level		C: 4D112292	
<p><b>Notes:</b></p> <p>*1. Indoor temp.: 27°CDB, 19°CWB / outdoor temp.: 35°CDB / Equivalent piping length: 7.5 m, level difference: 0 m. *2. Indoor temp.: 20°CDB / outdoor temp.: 7°CDB, 6°CWB / Equivalent piping length: 7.5 m, level difference: 0 m. *3. Capacities are net, including a deduction for cooling (an addition for heating) for indoor fan motor heat.</p> <p>*4. External static pressure is changeable to set by the remote controller. This pressure means "High static pressure - Standard static pressure". (Factory setting is 10 Pa for FXDQ-PD models and 15 Pa for FXDQ-ND models.)</p> <p>*5. The operation sound levels are the conversion values in anechoic chamber.</p> <p>In practice, the sound tend to be larger than the specified values due to ambient noise or reflections. When the place of suction is changed to the bottom suction, the sound level will increase by approx, 5dBA.</p>				

### DIMENSIONS

### MODEL: SLIM DUCT / WITH DRAIN PUMP 50/60 Hz - FXDQ40NDVE

Unit: mm



← IN CASE OF BACK-SUCTION →

NUMBER	NAME	DESCRIPTION
11	AIR FILTER(ACCESSORY)	
10	SOCKET FOR DRAIN	
9	INSPECTION DOOR	
8	SUSPENSION BRACKET	
7	POWER SUPPLY CONNECTION	
6	TRANSMISSION WIRING CONNECTION	
5	CONTROL BOX	
4	DRAIN HOSE(ACCESSORY)	I. D. φ 25 (OUTLET)
3	DRAIN PIPE CONNECTION	VP20 (O. D. φ 26 / I. D. φ 20)
2	GAS PIPE CONNECTION	φ 12.7 (FLARE CONNECTION)
1	LIQUID PIPE CONNECTION	φ 6.4 FLARE (CONNECTION)

NOTE) 1. IN CASE OF BACK-SUCTION, MOUNT CHAMBER COVER TO BOTTOM SIDE OF THE UNIT.  
 IN CASE OF BOTTOM-SUCTION, MOUNT CHAMBER COVER TO BACK SIDE OF THE UNIT.  
 2. LOCATION OF UNIT'S NAME PLATE: CONTROL BOX COVER  
 3. LOCATE THE AIR FILTER AT THE SUCTION SIDE.  
 (SELECT THE COLOR/METHOD(GRAVITY METHOD))  
 IT CAN NOT BE EQUIPPED WITH AIR FILTER(ACCESSORY) WHEN CONNECTING DUCT TO SUCTION SIDE.

3D045494E