

MODEL: SLIM DUCT / WITH DRAIN PUMP 50/60 Hz - FXDQ63NDVE

PROJECT NAME:

Location:	Approval:
Engineer:	Date:
Submitted to:	Construction:
Submitted by:	Unit #:
Reference:	Drawing #:

FEATURES AND BENEFITS

Slim and smooth design suits your shallow ceiling

Only 1,100 mm in width and 31 kg in weight, this model is suitable to install in limited spaces like drop-ceilings in hotels.

Only 200 mm in height, this model can be installed in rooms with as little as 240 mm in height for the ceiling space between the drop-ceiling and ceiling slab.

Control of the airflow rate can be selected from 3-step control and Auto. Auto airflow rate control can be selected with wired remote controller BRC1E63 and BRC2E61.

Low operation sound level.

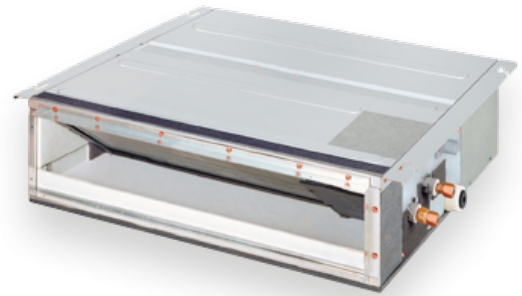
External static pressure selectable by remote controller switching make this indoor unit a very comfortable and flexible model.

FXDQ-PD and FXDQ-ND models are available in two types to suit different installation conditions.

FXDQ-PD/NDVE: with a drain pump (750 mm lift) as a standard accessory.

FXDQ-PD/NDVET: without a drain pump.

EXTERNAL APPEARANCE



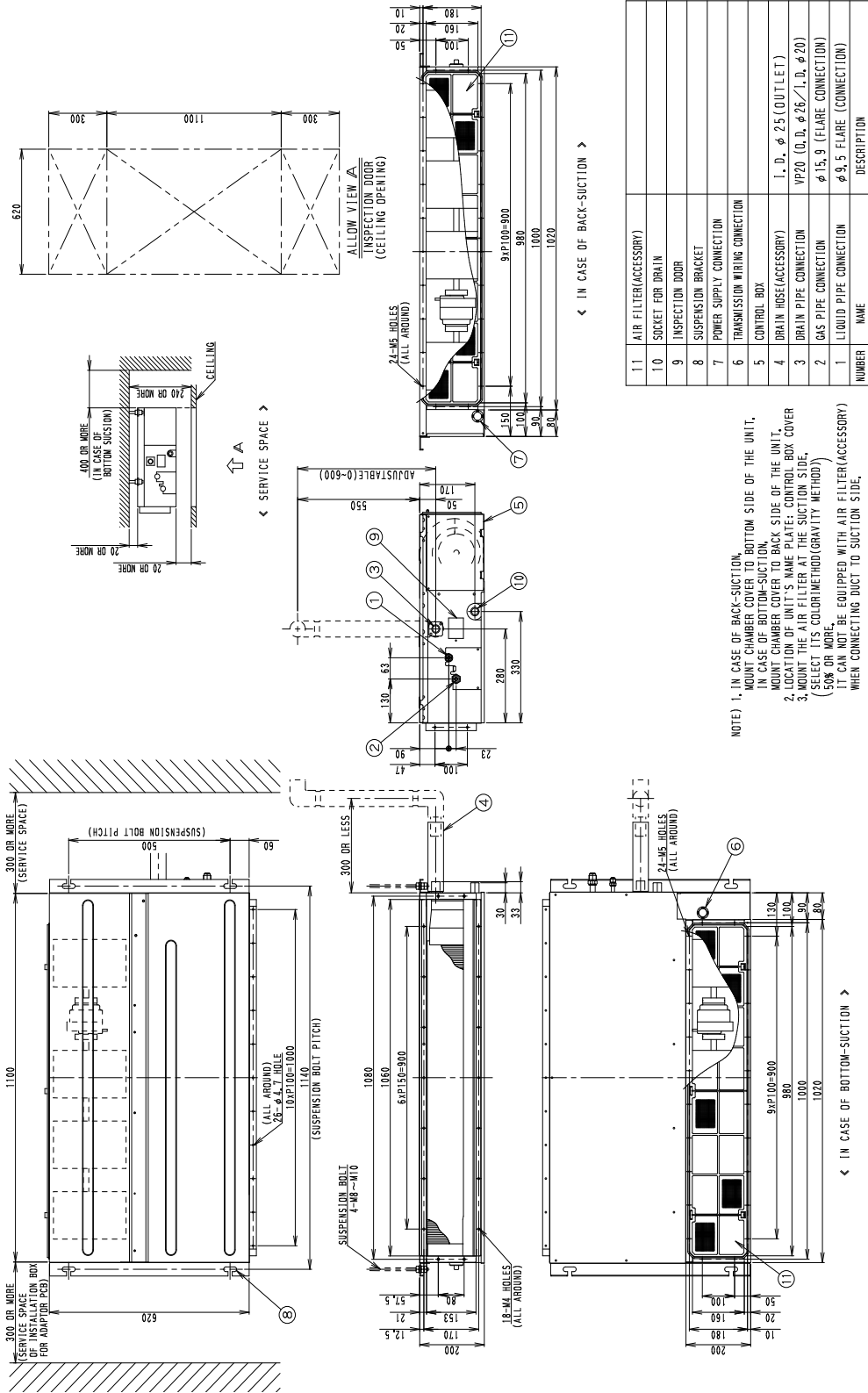
R-410A

Model			FXDQ63NDVE		
Power supply			1 phase, 220-240/220 V, 50/60 Hz		
*1 *3 Cooling capacity			kcal/h	6,100	
			Btu/h	24,200	
			kW	7.1	
*2 *3 Heating capacity			kcal/h	6,900	
			Btu/h	27,300	
			kW	8.0	
Power input	Cooling	50 Hz	kW	0.181	
		60 Hz	kW	0.192	
	Heating	50 Hz	kW	0.168	
		60 Hz	kW	0.179	
Casing / Colour			Galvanized steel plate		
Dimensions: (H×W×D)			mm	200×1,100×620	
Coil (Cross fin coil)	Rows × Stages × Fin pitch		mm	3×12×1.5	
	Face area		m ²	0.227	
Fan	Model		—		
	Type		Sirocco fan		
	Motor output × Number of units		W	130×1	
	Airflow rate (HH/H/L)			m ³ /min	16.5/14.5/13.0
				l/s	275/241/216
				cfm	583/512/459
*4 External static pressure		Pa	44-15		
Drive		Direct drive			
Temperature control			Microprocessor thermostat for cooling and heating		
Sound absorbing thermal insulation material			Foamed polyethylene		
Air filter			Removal / Washable / Mildew proof		
Piping connections	Liquid pipes		mm	φ9.5 (Flare connection)	
	Gas pipes		mm	φ15.9 (Flare connection)	
	Drain pipe		mm	VP20 (External dia. 26, Internal dia. 20)	
Mass			kg	31	
*5 Sound pressure level (HH/H/L)			dB(A)	33/31/29	
Sound power level (HH/H/L)			dB(A)	61/59/57	
Safety devices			Fuse, Thermal protector for fan motor		
Refrigerant control			Electronic expansion valve		
Standard accessories			Operation manual, Installation manual, Drain hose, Sealing pads, Clamps, Washers, Insulation for fitting, Clamp metal, Washer fixing plate, Screws for duct flanges, Air filter		
Drawing No.	Specifications		C: 3D 109082B		
	Sound level		C: 4D 112295		
<p>Notes:</p> <p>*1. Indoor temp.: 27°CDB, 19°CWB / outdoor temp.: 35°CDB / Equivalent piping length: 7.5 m, level difference: 0 m. *2. Indoor temp.: 20°CDB / outdoor temp.: 7°CDB, 6°CWB / Equivalent piping length: 7.5 m, level difference: 0 m. *3. Capacities are net, including a deduction for cooling (an addition for heating) for indoor fan motor heat.</p> <p>*4. External static pressure is changeable to set by the remote controller. This pressure means "High static pressure - Standard static pressure". (Factory setting is 10 Pa for FXDQ-PD models and 15 Pa for FXDQ-ND models.)</p> <p>*5. The operation sound levels are the conversion values in anechoic chamber.</p> <p>In practice, the sound tend to be larger than the specified values due to ambient noise or reflections. When the place of suction is changed to the bottom suction, the sound level will increase by approx, 5dBA.</p>					

DIMENSIONS

MODEL: SLIM DUCT / WITH DRAIN PUMP 50/60 Hz - FXDQ63NDVE

Unit: mm



NUMBER	NAME	DESCRIPTION
11	AIR FILTER (ACCESSORY)	
10	SOCKET FOR DRAIN	
9	INSPECTION DOOR	
8	SUSPENSION BRACKET	
7	POWER SUPPLY CONNECTION	
6	TRANSMISSION WIRING CONNECTION	
5	CONTROL BOX	
4	DRAIN HOSE (ACCESSORY)	I. D. ϕ 25 (OUTLET)
3	DRAIN PIPE CONNECTION	VP20 (I. D. ϕ 26 / I. D. ϕ 20)
2	GAS PIPE CONNECTION	ϕ 15, 9 (FLARE CONNECTION)
1	LIQUID PIPE CONNECTION	ϕ 9, 5 (FLARE CONNECTION)

NOTE) 1. IN CASE OF BACK-SUCTION, MOUNT CHAMBER COVER TO BOTTOM SIDE OF THE UNIT.
 IN CASE OF BOTTOM-SUCTION, BACK SIDE OF THE UNIT, CUT OUT OPENING IS MADE AT CONTROL BOX COVER.
 2. LOCATE OPENING IS MADE AT CONTROL BOX COVER.
 3. MOUNT THE AIR FILTER AT THE SUCTION SIDE.
 (SELECT ITS COLOR METHOD (GRAVITY METHOD))
 IT CAN NOT BE EQUIPPED WITH AIR FILTER (ACCESSORY) WHEN CONNECTING DUCT TO SUCTION SIDE.

3D045496F