

MODEL: ROUND FLOW CASSETTE WITH SENSING 50/60 Hz - FXFSQ25AVM

PROJECT NAME:

Location:	Approval:
Engineer:	Date:
Submitted to:	Construction:
Submitted by:	Unit #:
Reference:	Drawing #:

FEATURES AND BENEFITS

Dual sensors

Dual sensor and individual airflow direction control automatically provide optimal control of airflow.

Infrared presence sensor

The 4 sensors detect human presence.

Infrared floor sensor

The sensor detects the floor temperature and automatically adjusts operation of the indoor unit to reduce the temperature difference between the ceiling and the floor.

Sensing sensor low mode (default: OFF)

When there are no people in a room, the set temperature is shifted automatically.

The system automatically saves energy by detecting whether or not the room is occupied. The set temperature is shifted automatically if the room is unoccupied.

Sensing sensor stop mode (default: OFF)

When there are no people in a room, the system stops automatically.

The system automatically saves energy by detecting whether or not the room is occupied. Based on preset user conditions, the system automatically stops operation if the room is unoccupied.

Auto airflow function

With Auto airflow direction mode, flaps are controlled to deliver optimal airflow when the room is unoccupied.

When human is detected, air direction is set to "Swing (narrow)" to deliver cool air to users.

Draft prevention function

With Auto airflow direction mode, flaps are controlled to deliver optimal airflow when the room is unoccupied.

When human is detected, drafts are prevented by making the flap horizontal.

360° Airflow & Selectable Airflow Pattern

Indoor unit offers 360° airflow discharges air in all directions with more uniform temperature distribution.

Because air flows out from corner outlets, comfort spreads more widely.

Switchable fan speed: 5 steps and Auto

Control of airflow rate has been improved from 3-step to 5-step.

Auto airflow rate is newly available.

Suitable for high ceilings

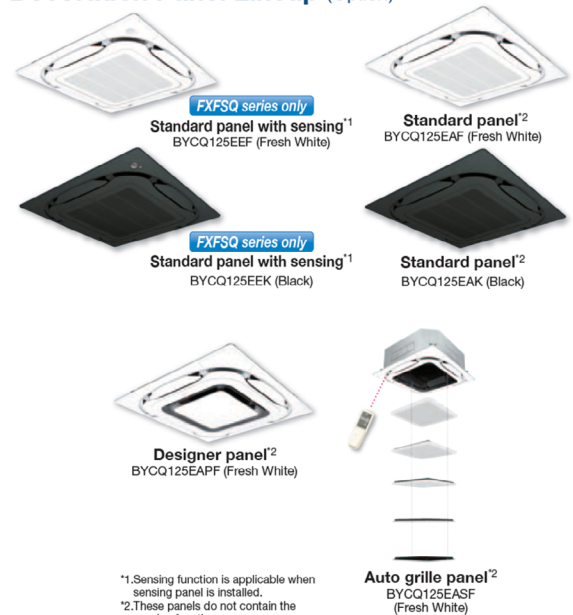
Even in spaces with high ceilings, a comfortable airflow is carried down to the floor level.

EXTERNAL APPEARANCE



R-410A

Decoration Panel Lineup (Option)



*1.Sensing function is applicable when sensing panel is installed.
*2.These panels do not contain the sensing function.

SPECIFICATIONS

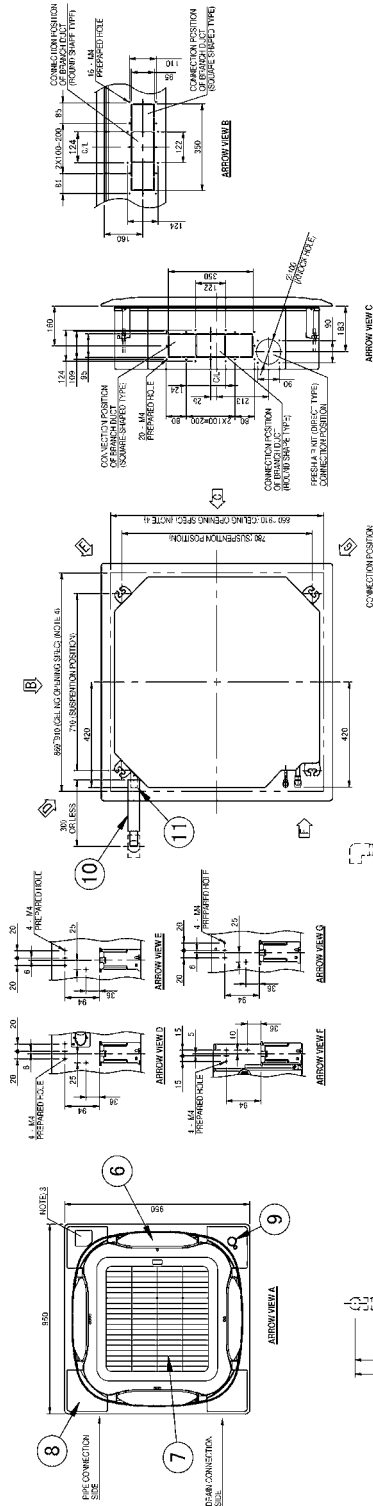
MODEL: ROUND FLOW CASSETTE WITH SENSING 50/60 Hz - FXFSQ25AVM

Model			FXFSQ25AVM	
Power supply			1 phase, 220-240/220-230 V, 50/60 Hz	
*1 *3 Cooling capacity			kcal/h	2,400
			Btu/h	9,600
			kW	2.8
*2 *3 Heating capacity			kcal/h	2,800
			Btu/h	10,900
			kW	3.2
Power input	Cooling	50 Hz	kW	0.028
		60 Hz	kW	0.028
	Heating	50 Hz	kW	0.026
		60 Hz	kW	0.026
Casing / Colour			Galvanised steel plate	
Dimensions: (H×W×D)			mm	256×840×840
Coil (Cross fin coil)	Rows × Stages × Fin pitch		mm	2×8×1.2 (φ5)
	Face area		m ²	0.244
Fan	Model		QTS48G15M	
	Type		Turbo fan	
	Motor output × Number of units		W	53×1
	Airflow rate (H/HM/M/ML/L)		m ³ /min	13/12.5/11.5/11/10
			l/s	217/208/192/183/167
Drive		cfm	459/441/406/388/353	
Temperature control			Microprocessor thermostat for cooling and heating	
Sound absorbing thermal insulation material			Polyurethane form	
Piping connections	Liquid pipes		mm	φ6.4
	Gas pipes		mm	φ12.7
	Drain pipe		mm	φ26 (hole)
Mass			kg	19
*4 Sound pressure level (H/HM/M/ML/L)			dB(A)	30.0/29.5/28.5/28.0/27.0
Safety devices			Fuse	
Refrigerant control			Electronic expansion valve	
Decoration panel (option)	Model		BYCQ125EAF	
	Colour		Fresh white	
	Dimensions: (H×W×D)		mm	50×950×950
	Air filter		Resin net (with mould resistance)	
	Mass		kg	5.5
Standard accessories			Operation manual, Installation manual, Pattern for installation, Drain hose, Clamp metal, Washer fixing plate, Sealing pads, Clamps, Screws, Washer for hanging bracket, Insulation for fitting, Installation guide	
Drawing No.	Specification		C: 3D112945B	
	Sound level		C: 4D112880A	
<p>Notes:</p> <p>*1. Indoor temp.: 27°CDB, 19°CWB / outdoor temp.: 35°CDB, 24°CWB / equivalent piping length: 7.5 m, level difference: 0 m.</p> <p>*2. Indoor temp.: 20°CDB, 15°CWB / outdoor temp.: 7°CDB, 6°CWB / equivalent piping length: 7.5 m, level difference: 0 m.</p> <p>*3. Capacities are net, including a deduction for cooling (an addition for heating) for indoor fan motor heat.</p> <p>*4. Anechoic chamber conversion value, measured at a point 1.5 m downward from the unit center. During actual operation, these values are normally somewhat higher as a result of ambient conditions.</p>				

DIMENSIONS

MODEL: ROUND FLOW CASSETTE WITH SENSING 50/60 Hz - FXFSQ25AVM

Unit: mm



• DECORATION PANEL

□	DECORATION PANEL (FRS) (W/ L)
□	DECORATION PANEL (FRS) (W/ L)
□	DECORATION PANEL (FRS) (W/ L)

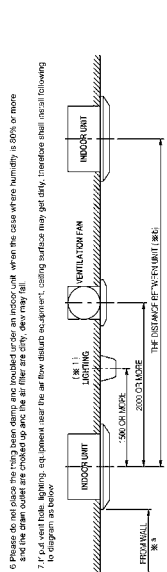
Note: Option decoration panel has 2 types when external color are different. It can be chosen one or above 2 types depend on your specify.

• INSTALLATION SPACE



Note: The necessary space is 500 mm or more when the air-outlet is blocked with the accessory.
 *When the air-outlet is blocked with the accessory, the necessary space is 200 mm or more.
 *When the air-outlet is close to the wall surface (both side of the air-outlet), the recommend

ITEM	DESCRIPTION	UNIT	REMARK
1	FRANZ HOSE CONNECTION POINT	1/2" (OD) (3/8" (ID))	
2	FRANZ HOSE CONNECTION POINT	1/2" (OD) (3/8" (ID))	
3	FRANZ HOSE CONNECTION POINT	1/2" (OD) (3/8" (ID))	
4	FRANZ HOSE CONNECTION POINT	1/2" (OD) (3/8" (ID))	
5	FRANZ HOSE CONNECTION POINT	1/2" (OD) (3/8" (ID))	
6	FRANZ HOSE CONNECTION POINT	1/2" (OD) (3/8" (ID))	
7	FRANZ HOSE CONNECTION POINT	1/2" (OD) (3/8" (ID))	
8	FRANZ HOSE CONNECTION POINT	1/2" (OD) (3/8" (ID))	
9	FRANZ HOSE CONNECTION POINT	1/2" (OD) (3/8" (ID))	
10	FRANZ HOSE CONNECTION POINT	1/2" (OD) (3/8" (ID))	
11	FRANZ HOSE CONNECTION POINT	1/2" (OD) (3/8" (ID))	
12	FRANZ HOSE CONNECTION POINT	1/2" (OD) (3/8" (ID))	



6 Please do not place the heavy beam slim and inhibit under an indoor unit when the case where humidity is 80% or more.
 7 If the lighting equipment uses the air flow sensing captured by ceiling surface may get dirty, therefore their installation to ceiling is not recommended.

8 Per for long position of human detection and temp sensor will be follow to diagram of "PER FOR LONG POSITION OF HUMAN DETECTION AND TEMP SENSOR".

Model	FRS2535
Width	956
Depth	840
Height	150
Weight	4.50 (kg)

1 Showing location for Manufacturer's label
 2 In case of using wireless remote control, please refer to the instruction manual of the remote control.
 3 In case of using wireless remote control, please refer to the instruction manual of the remote control.
 4 Through the installation is acceptable up to maximum of 9.10 mm square ceiling.
 5 When the temperature and humidity sensor is installed in the ceiling, please refer to the instruction manual of the sensor.
 6 Please do not place the heavy beam slim and inhibit under an indoor unit when the case where humidity is 80% or more.
 7 If the lighting equipment uses the air flow sensing captured by ceiling surface may get dirty, therefore their installation to ceiling is not recommended.