

## MODEL: ROUND FLOW CASSETTE WITH SENSING 50/60 Hz - FXFSQ40AVM

### PROJECT NAME:

Location:	Approval:
Engineer:	Date:
Submitted to:	Construction:
Submitted by:	Unit #:
Reference:	Drawing #:

### FEATURES AND BENEFITS

#### Dual sensors

**Dual sensor and individual airflow direction control automatically provide optimal control of airflow.**

#### Infrared presence sensor

The 4 sensors detect human presence.

#### Infrared floor sensor

The sensor detects the floor temperature and automatically adjusts operation of the indoor unit to reduce the temperature difference between the ceiling and the floor.

#### Sensing sensor low mode (default: OFF)

**When there are no people in a room, the set temperature is shifted automatically.**

The system automatically saves energy by detecting whether or not the room is occupied. The set temperature is shifted automatically if the room is unoccupied.

#### Sensing sensor stop mode (default: OFF)

**When there are no people in a room, the system stops automatically.**

The system automatically saves energy by detecting whether or not the room is occupied. Based on preset user conditions, the system automatically stops operation if the room is unoccupied.

#### Auto airflow function

With Auto airflow direction mode, flaps are controlled to deliver optimal airflow when the room is unoccupied.

When human is detected, air direction is set to "Swing (narrow)" to deliver cool air to users.

#### Draft prevention function

With Auto airflow direction mode, flaps are controlled to deliver optimal airflow when the room is unoccupied.

When human is detected, drafts are prevented by making the flap horizontal.

#### 360° Airflow & Selectable Airflow Pattern

Indoor unit offers 360° airflow discharges air in all directions with more uniform temperature distribution.

Because air flows out from corner outlets, comfort spreads more widely.

#### Switchable fan speed: 5 steps and Auto

Control of airflow rate has been improved from 3-step to 5-step.

Auto airflow rate is newly available.

#### Suitable for high ceilings

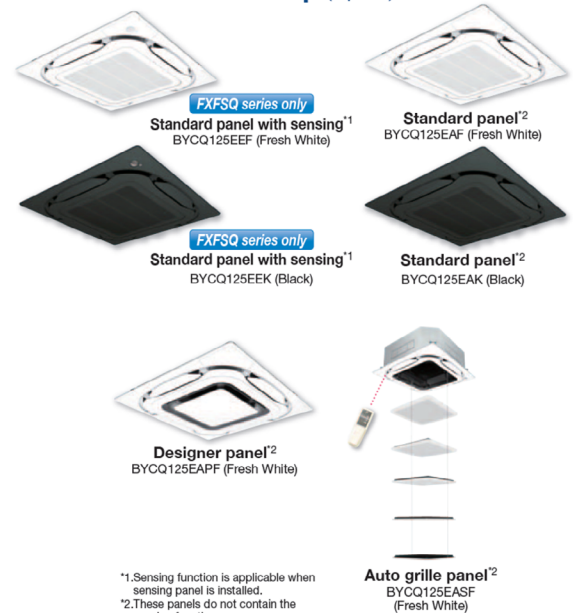
Even in spaces with high ceilings, a comfortable airflow is carried down to the floor level.

### EXTERNAL APPEARANCE



**R-410A**

### Decoration Panel Lineup (Option)



\*1.Sensing function is applicable when sensing panel is installed.  
\*2.These panels do not contain the sensing function.

## SPECIFICATIONS

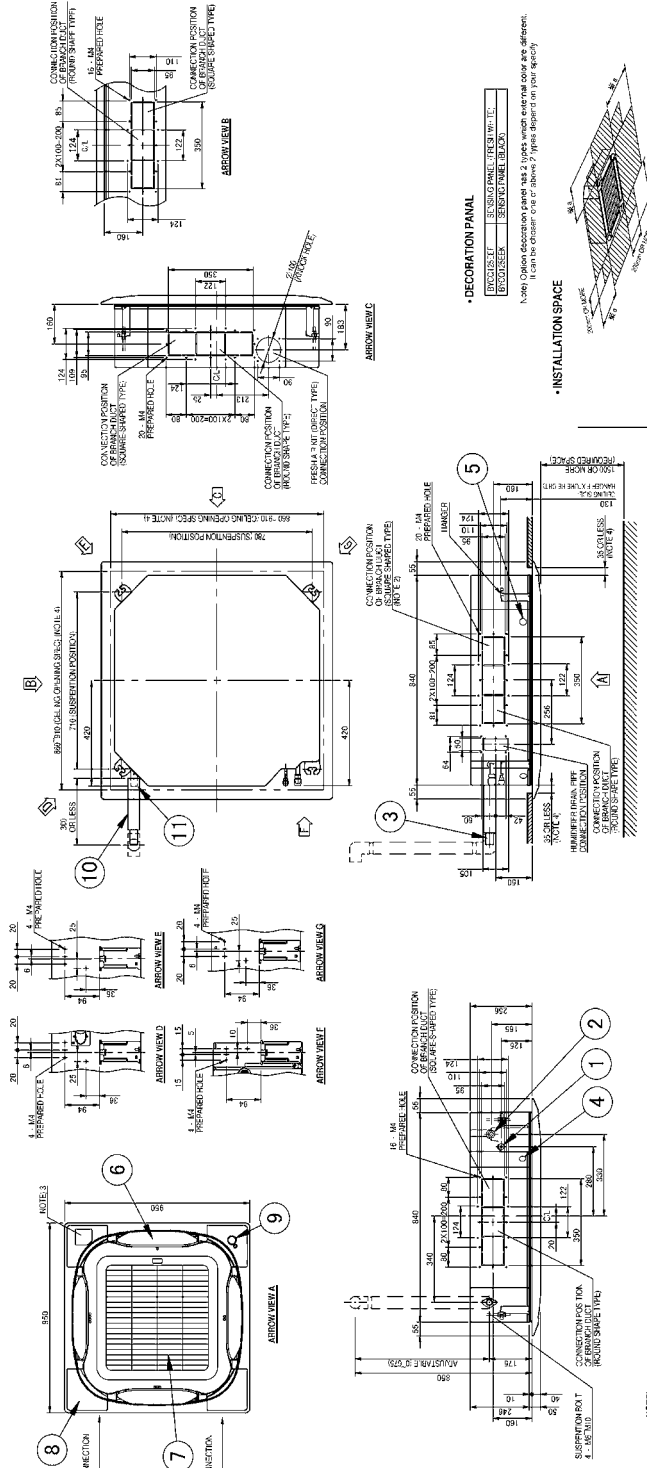
## MODEL: ROUND FLOW CASSETTE WITH SENSING 50/60 Hz - FXFSQ40AVM

Model			FXFSQ40AVM	
Power supply			1 phase, 220-240/220-230 V, 50/60 Hz	
*1 *3 Cooling capacity			kcal/h	3,900
			Btu/h	15,400
			kW	4.5
*2 *3 Heating capacity			kcal/h	4,300
			Btu/h	17,100
			kW	5.0
Power input	Cooling	50 Hz	kW	0.035
		60 Hz	kW	0.035
	Heating	50 Hz	kW	0.034
		60 Hz	kW	0.034
Casing / Colour			Galvanised steel plate	
Dimensions: (HxWxD)			mm	256x840x840
Coil (Cross fin coil)	Rows x Stages x Fin pitch		mm	2x8x1.2 (φ5)
	Face area		m <sup>2</sup>	0.244
Fan	Model			QTS48G15M
	Type			Turbo fan
	Motor output x Number of units		W	53x1
	Airflow rate (H/HM/M/ML/L)		m <sup>3</sup> /min	17/13.5/12.5/12/11
			l/s	283/225/208/200/183
		cfm	600/477/441/424/388	
Drive			Direct drive	
Temperature control			Microprocessor thermostat for cooling and heating	
Sound absorbing thermal insulation material			Polyurethane form	
Piping connections	Liquid pipes		mm	φ6.4
	Gas pipes		mm	φ12.7
	Drain pipe		mm	φ26 (hole)
Mass			kg	19
*4 Sound pressure level (H/HM/M/ML/L)			dB(A)	35/29.5/29.0/28.0/27.0
Safety devices			Fuse	
Refrigerant control			Electronic expansion valve	
Decoration panel (option)	Model			BYCQ125EAF
	Colour			Fresh white
	Dimensions: (HxWxD)		mm	50x950x950
	Air filter			Resin net (with mould resistance)
		Mass	kg	5.5
Standard accessories			Operation manual, Installation manual, Pattern for installation, Drain hose, Clamp metal, Washer fixing plate, Sealing pads, Clamps, Screws, Washer for hanging bracket, Insulation for fitting, Installation guide	
Drawing No.	Specification			C: 3D112945B
	Sound level			C: 4D112874A
<p><b>Notes:</b></p> <p>*1. Indoor temp.: 27°CDB, 19°CWB / outdoor temp.: 35°CDB, 24°CWB / equivalent piping length: 7.5 m, level difference: 0 m.</p> <p>*2. Indoor temp.: 20°CDB, 15°CWB / outdoor temp.: 7°CDB, 6°CWB / equivalent piping length: 7.5 m, level difference: 0 m.</p> <p>*3. Capacities are net, including a deduction for cooling (an addition for heating) for indoor fan motor heat.</p> <p>*4. Anechoic chamber conversion value, measured at a point 1.5 m downward from the unit center. During actual operation, these values are normally somewhat higher as a result of ambient conditions.</p>				

## DIMENSIONS

## MODEL: ROUND FLOW CASSETTE WITH SENSING 50/60 Hz - FXFSQ40AVM

Unit: mm

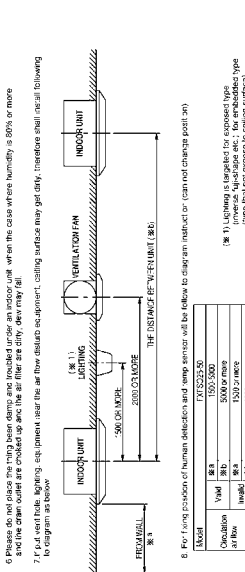


11.1 DOWN FLOW CONNECTION POINT

1	DOWN FLOW CONNECTION POINT
2	DOWN FLOW CONNECTION POINT
3	DOWN FLOW CONNECTION POINT
4	DOWN FLOW CONNECTION POINT
5	DOWN FLOW CONNECTION POINT
6	DOWN FLOW CONNECTION POINT
7	DOWN FLOW CONNECTION POINT
8	DOWN FLOW CONNECTION POINT
9	DOWN FLOW CONNECTION POINT
10	DOWN FLOW CONNECTION POINT
11	DOWN FLOW CONNECTION POINT

11.2 DOWN FLOW CONNECTION POINT

1	DOWN FLOW CONNECTION POINT
2	DOWN FLOW CONNECTION POINT
3	DOWN FLOW CONNECTION POINT
4	DOWN FLOW CONNECTION POINT
5	DOWN FLOW CONNECTION POINT
6	DOWN FLOW CONNECTION POINT
7	DOWN FLOW CONNECTION POINT
8	DOWN FLOW CONNECTION POINT
9	DOWN FLOW CONNECTION POINT
10	DOWN FLOW CONNECTION POINT
11	DOWN FLOW CONNECTION POINT



6. For the living position of human deflection and lamp sensor will be follow to clear an instruction or (claim not change post. 3K)

Model	FXFSQ40AVM
Option	50/60 Hz
Ar flow	1500 or more
Ar flow	4500 or more

7. The unit shall be installed in the air flow direction as shown in the diagram below.

8. The unit shall be installed in the air flow direction as shown in the diagram below.

- NOTE**
- Shipping location for Manufacturer's label: See the shipping label for Manufacturer's label for indoor air.
  - Shipping location for Manufacturer's label: See the shipping label for Manufacturer's label for indoor air.
  - Shipping location for Manufacturer's label: See the shipping label for Manufacturer's label for indoor air.
  - Shipping location for Manufacturer's label: See the shipping label for Manufacturer's label for indoor air.
  - Shipping location for Manufacturer's label: See the shipping label for Manufacturer's label for indoor air.
  - Shipping location for Manufacturer's label: See the shipping label for Manufacturer's label for indoor air.
  - Shipping location for Manufacturer's label: See the shipping label for Manufacturer's label for indoor air.
  - Shipping location for Manufacturer's label: See the shipping label for Manufacturer's label for indoor air.
  - Shipping location for Manufacturer's label: See the shipping label for Manufacturer's label for indoor air.
  - Shipping location for Manufacturer's label: See the shipping label for Manufacturer's label for indoor air.
  - Shipping location for Manufacturer's label: See the shipping label for Manufacturer's label for indoor air.

3D112984C