

### PROJECT NAME:

Location:	Approval:
Engineer:	Date:
Submitted to:	Construction:
Submitted by:	Unit #:
Reference:	Drawing #:

### FEATURES AND BENEFITS

#### Comfort

Auto swing (up and down) and louvres (left and right by hand) bring comfort to the room.

Louvre manually adjusts for straight or wide angle airflow.

#### Quiet operation

Uses quiet stream fan and other quiet technologies. (FXHQ32-100MA)

#### Easy maintenance

##### Non-dew flap

Condensation does not easily form on and dirt does not cling to non-dew flap. It is easy to clean.

##### Easy-clean, flat surfaces

It is easy to wipe dirt off the flat side and lower surfaces of the unit.

Oil-resistant plastic is used for the air suction grille. This satisfies durability in restaurants and other similar environments.

**Note:** Intended for use in salons, dining rooms, and ordinary sales floors, this specification is not suitable for kitchens or other harsh environments.

#### Installation flexibility

##### Flexible installation

The unit fits more snugly into tight spaces.

Drain pump kit (option) can be easily incorporated.

Drain pipe connection can be done inside the unit. Refrigerant and drain pipe outlets are at the same opening.

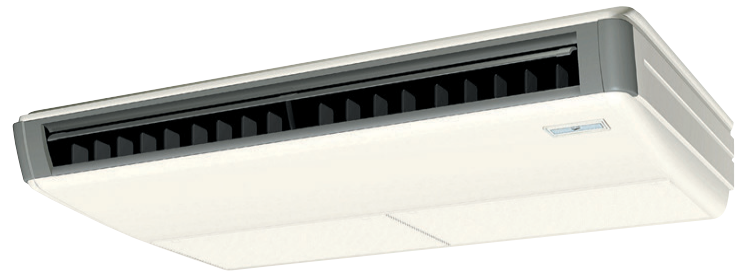
DIII-NET communication standard

Connection to a centralised control system is available, no need for option card.

All wiring and internal servicing can be done from under the unit.

Easier piping work for rear side by removable frame

### EXTERNAL APPEARANCE

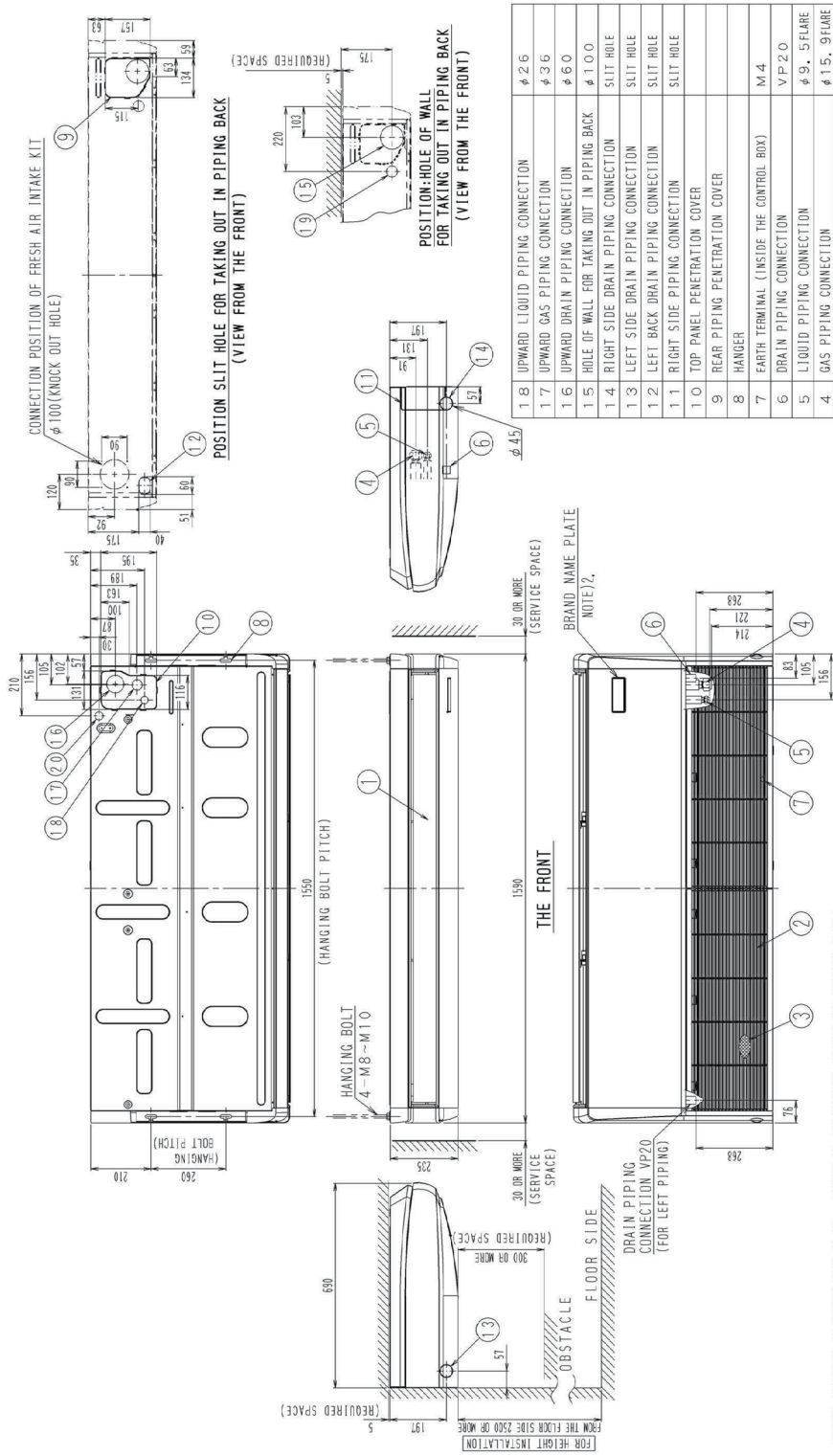


R-410A

Model			FXHQ125AVM	
Power supply			1 phase, 220-240 V/220-230 V, 50/60 Hz	
*1 *3 Cooling capacity			kcal/h	12,100
			Btu/h	48,100
			kW	14.1
*2 *3 Heating capacity			kcal/h	13,800
			Btu/h	54,600
			kW	16.0
Power input	Cooling	50 Hz	kW	0.168
		60 Hz	kW	0.168
	Heating	50 Hz	kW	0.168
		60 Hz	kW	0.168
Casing / Colour			Sheet metal / White	
Dimensions: (HxWxD)			mm	235x1,590x690
Coil (Cross fin coil)	Rows x Stages x Fin pitch		mm	3x12x1.5 φ7
	Face area		m <sup>2</sup>	0.398
Fan	Model		EQDW01EDK	
	Type		Sirocco fan	
	Motor output x Number of units		W	150x1
	Airflow rate (H/L)		m <sup>3</sup> /min	34/26/20
			l/s	567/433/333
			cfm	1,200/918/706
Drive		Direct drive		
Temperature control			Microprocessor thermostat for cooling and heating	
Sound absorbing thermal insulation material			Glass wool	
Air filter			Resin net (with mold resistant)	
Piping Connections	Liquid pipes		mm	φ9.5 (Flare connection)
	Gas pipes		mm	φ15.9 (Flare connection)
	Drain pipe		mm	VP20 (External dia. 26, Internal dia. 20)
Mass			kg	41
*4 Sound pressure level (H/L)			dB(A)	46/41/37
Safety devices			Fuse, Thermal protector for fan motor	
Refrigerant control			Electronic expansion valve	
Standard accessories			Operation manual, Installation manual, Drain hose, Paper pattern for installation, Clamp metal, Insulation for fitting, Clamps, Washers	
Drawing No.	Specification		C: 3D 121195B	
	Sound level		C: 4D 121497A	
<p><b>Notes:</b></p> <p>*1. Indoor temp.: 27°CDB, 19°CWB / outdoor temp.: 35°CDB / Equivalent piping length: 7.5 m, level difference: 0 m. *2. Indoor temp.: 20°CDB / outdoor temp.: 7°CDB, 6°CWB / Equivalent piping length: 7.5 m, level difference: 0 m. *3. Capacities are net, including a deduction for cooling (an addition for heating) for indoor fan motor heat.</p> <p>*4. Anechoic chamber conversion value, measured at a point 1 m in front of the unit and 1 m downward. During actual operation, these values are normally somewhat higher as a result of ambient conditions.</p>				

### DIMENSIONS

Unit: mm



NOTE 1. LOCATION OF UNIT'S NAME PLATE - BOTTOM OF FAN HOUSING INSIDE THE SUCTION GRILLE.  
 2. IN CASE OF USING WIRELESS REMOTE CONTROLLER, THIS POSITION WILL BE A SIGNAL RECEIVER.  
 REFER TO THE DRAWING OF WIRELESS REMOTE CONTROLLER IN DETAIL.  
 3. PLEASE DO NOT PLACE THE THING BEEN DAMP AND TROUBLED UNDER AN INDOOR UNIT.  
 WHEN THE CASE WHERE HUMIDITY IS 80% OR MORE, AND THE DRAIN OUTLET ARE CHOKED UP  
 AND THE AIR FILTER ARE DIRTY, DEW MAY FALL.

NUMBER	DESCRIPTION	NAME
1 8	UPWARD LIQUID PIPING CONNECTION	φ 2.6
1 7	UPWARD GAS PIPING CONNECTION	φ 3.6
1 6	UPWARD DRAIN PIPING CONNECTION	φ 6.0
1 5	HOLE OF WALL FOR TAKING OUT IN PIPING BACK	φ 10.0
1 4	RIGHT SIDE DRAIN PIPING CONNECTION	SPLIT HOLE
1 3	LEFT SIDE DRAIN PIPING CONNECTION	SPLIT HOLE
1 2	RIGHT SIDE PIPING CONNECTION	SPLIT HOLE
1 0	TOP PANEL PENETRATION COVER	
9	REAR PIPING PENETRATION COVER	
8	HANGER	M 4
7	EARTH TERMINAL (INSIDE THE CONTROL BOX)	VP2.0
6	DRAIN PIPING CONNECTION	φ 9.5 FLARE
5	LIQUID PIPING CONNECTION	φ 1.5, 9FLARE
4	GAS PIPING CONNECTION	
3	AIR FILTER	
2	AIR SUCTION GRILLE	
1	AIR DISCHARGE GRILLE	

NUMBER	DESCRIPTION	NAME
2 0	POWER SUPPLY WIRING AND A UNIT WIRING UPPER CONNECTION	φ 2.9
1 9	POWER SUPPLY WIRING AND A UNIT WIRING BACK CONNECTION	φ 2.9

3D096240G