

### PROJECT NAME:

Location:	Approval:
Engineer:	Date:
Submitted to:	Construction:
Submitted by:	Unit #:
Reference:	Drawing #:

### FEATURES AND BENEFITS

#### Installation flexibility

Slim design

- With a height of only 300 mm, installation is possible even in buildings with narrow ceiling spaces.

Standard DC drain pump

- DC drain pump is equipped as standard accessory with 700 mm lift.

Bottom suction possible

- Bottom suction is possible which facilitate installation and maintenance. Wiring connections and maintenance of control box can be done from under the unit with an optional shield plate for side plate\* extending the degree of freedom for installation in the ceiling.

#### Design flexibility

Adjustable external static pressure

- Using a DC fan motor, the external static pressure can be controlled within a range of 30 Pa\* to 200 Pa\*.

Comfortable airflow is achieved in accordance with conditions such as duct length.

#### Comfort

Switchable airflow rate

- Control of the airflow rate can be selected from 3-step control.

Auto airflow rate

- 5-step airflow rate is automatically controlled in accordance with the difference between room temperature and set temperature.

Auto airflow rate control can be selected with wired remote controller BRC1E63 and BRC2E61.

### EXTERNAL APPEARANCE



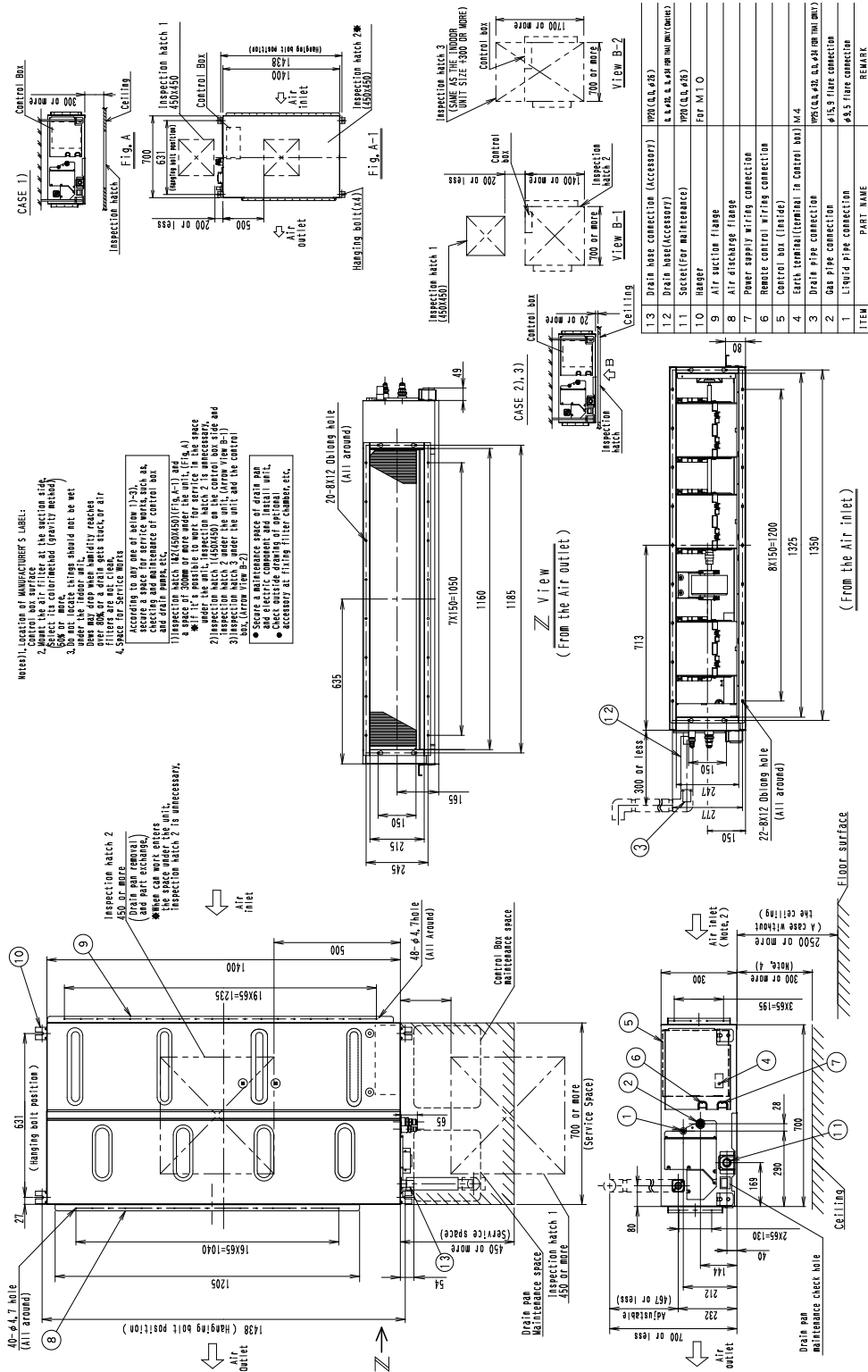
R-410A

### SPECIFICATIONS

Model			FXMQ140PAVE		
Power supply			1 phase, 220-240/220 V, 50/60 Hz		
*1 *3 Cooling capacity			kcal/h	13,800	
			Btu/h	54,600	
			kW	16.0	
*2 *3 Heating capacity			kcal/h	15,500	
			Btu/h	61,400	
			kW	18.0	
*7 Power input	Cooling	50 Hz	kW	0.405	
		60 Hz	kW	0.404	
	Heating	50 Hz	kW	0.380	
		60 Hz	kW	0.380	
Casing / Colour			Galvanized steel plate		
Dimensions: (H×W×D)			mm	300×1,400×700	
Coil (Cross fin coil)	Rows × Stages × Fin pitch		mm	3×16×1.5	
	Face area		m <sup>2</sup>	0.383	
Fan	Model		—		
	Type		Sirocco fan		
	Motor output × Number of units		W	350×1	
	Airflow rate (HH/H/L)			m <sup>3</sup> /min	46/39/32
				l/s	767/650/533
				cfm	1,624/1,377/1,130
External static pressure		Pa	Rated 100 (140-50 *4)		
Drive		Direct drive			
Temperature control			Microprocessor thermostat for cooling and heating		
Air filter			— *5		
Piping connections	Liquid pipes		mm	φ9.5 (Flare connection)	
	Gas pipes		mm	φ15.9 (Flare connection)	
	Drain pipe		mm	VP25 (External dia. 32) Internal dia. 25	
Mass			kg	46	
*6 Sound pressure level (HH/H/L)			dB(A)	46/45/43	
Sound power level (H)			dB	64	
Safety devices			Fuse, Fan driver overload protector		
Refrigerant control			Electronic expansion valve		
Standard accessories			Operation manual, Installation manual, Drain hose, Sealing pads, Clamps, Washers, Screws, Insulation for fitting, Clamp metal, Air discharge flange, Air suction flange		
Drawing No.	Specification		C: 3D105230B		
	Sound level		C: 4D063786A		
<p><b>Notes:</b></p> <p>*1. Indoor temp.: 27°CDB, 19°CWB / outdoor temp.: 35°CDB / Rated external static pressure / Equivalent piping length: 7.5 m, level difference: 0 m.</p> <p>*2. Indoor temp.: 20°CDB / outdoor temp.: 7°CDB, 6°CWB / Rated external static pressure / Equivalent piping length: 7.5 m, level difference: 0 m.</p> <p>*3. Capacities are net, including a deduction for cooling (an addition for heating) for indoor fan motor heat.</p> <p>*4. External static pressure is changeable in 7 stages (FXMQ20/25/32PAVE), 13 stages (FXMQ40PAVE), 14 stages (FXMQ50/63/80/100/125PAVE), 10 stages (FXMQ140PAVE) within the ( ) range by remote controller.</p> <p>*5. Air filter is not standard accessory, but please mount it in the duct system of the suction side. Select its dust collection efficiency (gravity method) 50% or more.</p> <p>*6. Anechoic chamber conversion value, measured at a point 1.5 m downward from the unit center. During actual operation, these values are normally somewhat higher as a result of ambient conditions.</p> <p>*7. Power input values are based on conditions of rated external static pressure.</p> <p>*8. Refer to <b>Electric Characteristics</b> for the power input when the airflow rate is maximum at maximum external static pressure.</p>					

### DIMENSIONS

Unit: mm



3D105235/

- INTERNAL LOCATION OF MANUFACTURER'S LABEL:
- Mount the air filter at the section step.
  - Mount the air filter at the section step.
  - Do not locate. Insulation should not be wet near the indoor unit.
  - Do not drop wash humidity reagent into the indoor unit.
  - Do not touch the top of the air filter.
  - Space for Service Man.
- ACCORDING TO THE USE OF PARTS (1)-(5) AS SHOWN IN FIG. A, B, C, AND D, CHECK THE LOCATION OF THE CONNECTION AND MAINTENANCE OF CONTROL BOX AND DRAIN HOSE, ETC.
- INSPECTION HATCH 1 (Ø630/630) (SEE FIG. A)
- INSPECTION HATCH 2 (Ø630/630) (SEE FIG. A)
- INSPECTION HATCH 3 (Ø630/630) (SEE FIG. A)
- INSPECTION HATCH 4 (Ø630/630) (SEE FIG. A)
- INSPECTION HATCH 5 (Ø630/630) (SEE FIG. A)
- INSPECTION HATCH 6 (Ø630/630) (SEE FIG. A)
- INSPECTION HATCH 7 (Ø630/630) (SEE FIG. A)
- INSPECTION HATCH 8 (Ø630/630) (SEE FIG. A)
- INSPECTION HATCH 9 (Ø630/630) (SEE FIG. A)
- INSPECTION HATCH 10 (Ø630/630) (SEE FIG. A)
- INSPECTION HATCH 11 (Ø630/630) (SEE FIG. A)
- INSPECTION HATCH 12 (Ø630/630) (SEE FIG. A)
- INSPECTION HATCH 13 (Ø630/630) (SEE FIG. A)
- INSPECTION HATCH 14 (Ø630/630) (SEE FIG. A)
- INSPECTION HATCH 15 (Ø630/630) (SEE FIG. A)
- INSPECTION HATCH 16 (Ø630/630) (SEE FIG. A)
- INSPECTION HATCH 17 (Ø630/630) (SEE FIG. A)
- INSPECTION HATCH 18 (Ø630/630) (SEE FIG. A)
- INSPECTION HATCH 19 (Ø630/630) (SEE FIG. A)
- INSPECTION HATCH 20 (Ø630/630) (SEE FIG. A)
- INSPECTION HATCH 21 (Ø630/630) (SEE FIG. A)
- INSPECTION HATCH 22 (Ø630/630) (SEE FIG. A)
- INSPECTION HATCH 23 (Ø630/630) (SEE FIG. A)
- INSPECTION HATCH 24 (Ø630/630) (SEE FIG. A)
- INSPECTION HATCH 25 (Ø630/630) (SEE FIG. A)
- INSPECTION HATCH 26 (Ø630/630) (SEE FIG. A)
- INSPECTION HATCH 27 (Ø630/630) (SEE FIG. A)
- INSPECTION HATCH 28 (Ø630/630) (SEE FIG. A)
- INSPECTION HATCH 29 (Ø630/630) (SEE FIG. A)
- INSPECTION HATCH 30 (Ø630/630) (SEE FIG. A)
- INSPECTION HATCH 31 (Ø630/630) (SEE FIG. A)
- INSPECTION HATCH 32 (Ø630/630) (SEE FIG. A)
- INSPECTION HATCH 33 (Ø630/630) (SEE FIG. A)
- INSPECTION HATCH 34 (Ø630/630) (SEE FIG. A)
- INSPECTION HATCH 35 (Ø630/630) (SEE FIG. A)
- INSPECTION HATCH 36 (Ø630/630) (SEE FIG. A)
- INSPECTION HATCH 37 (Ø630/630) (SEE FIG. A)
- INSPECTION HATCH 38 (Ø630/630) (SEE FIG. A)
- INSPECTION HATCH 39 (Ø630/630) (SEE FIG. A)
- INSPECTION HATCH 40 (Ø630/630) (SEE FIG. A)
- INSPECTION HATCH 41 (Ø630/630) (SEE FIG. A)
- INSPECTION HATCH 42 (Ø630/630) (SEE FIG. A)
- INSPECTION HATCH 43 (Ø630/630) (SEE FIG. A)
- INSPECTION HATCH 44 (Ø630/630) (SEE FIG. A)
- INSPECTION HATCH 45 (Ø630/630) (SEE FIG. A)
- INSPECTION HATCH 46 (Ø630/630) (SEE FIG. A)
- INSPECTION HATCH 47 (Ø630/630) (SEE FIG. A)
- INSPECTION HATCH 48 (Ø630/630) (SEE FIG. A)
- INSPECTION HATCH 49 (Ø630/630) (SEE FIG. A)
- INSPECTION HATCH 50 (Ø630/630) (SEE FIG. A)
- INSPECTION HATCH 51 (Ø630/630) (SEE FIG. A)
- INSPECTION HATCH 52 (Ø630/630) (SEE FIG. A)
- INSPECTION HATCH 53 (Ø630/630) (SEE FIG. A)
- INSPECTION HATCH 54 (Ø630/630) (SEE FIG. A)
- INSPECTION HATCH 55 (Ø630/630) (SEE FIG. A)
- INSPECTION HATCH 56 (Ø630/630) (SEE FIG. A)
- INSPECTION HATCH 57 (Ø630/630) (SEE FIG. A)
- INSPECTION HATCH 58 (Ø630/630) (SEE FIG. A)
- INSPECTION HATCH 59 (Ø630/630) (SEE FIG. A)
- INSPECTION HATCH 60 (Ø630/630) (SEE FIG. A)
- INSPECTION HATCH 61 (Ø630/630) (SEE FIG. A)
- INSPECTION HATCH 62 (Ø630/630) (SEE FIG. A)
- INSPECTION HATCH 63 (Ø630/630) (SEE FIG. A)
- INSPECTION HATCH 64 (Ø630/630) (SEE FIG. A)
- INSPECTION HATCH 65 (Ø630/630) (SEE FIG. A)
- INSPECTION HATCH 66 (Ø630/630) (SEE FIG. A)
- INSPECTION HATCH 67 (Ø630/630) (SEE FIG. A)
- INSPECTION HATCH 68 (Ø630/630) (SEE FIG. A)
- INSPECTION HATCH 69 (Ø630/630) (SEE FIG. A)
- INSPECTION HATCH 70 (Ø630/630) (SEE FIG. A)
- INSPECTION HATCH 71 (Ø630/630) (SEE FIG. A)
- INSPECTION HATCH 72 (Ø630/630) (SEE FIG. A)
- INSPECTION HATCH 73 (Ø630/630) (SEE FIG. A)
- INSPECTION HATCH 74 (Ø630/630) (SEE FIG. A)
- INSPECTION HATCH 75 (Ø630/630) (SEE FIG. A)
- INSPECTION HATCH 76 (Ø630/630) (SEE FIG. A)
- INSPECTION HATCH 77 (Ø630/630) (SEE FIG. A)
- INSPECTION HATCH 78 (Ø630/630) (SEE FIG. A)
- INSPECTION HATCH 79 (Ø630/630) (SEE FIG. A)
- INSPECTION HATCH 80 (Ø630/630) (SEE FIG. A)
- INSPECTION HATCH 81 (Ø630/630) (SEE FIG. A)
- INSPECTION HATCH 82 (Ø630/630) (SEE FIG. A)
- INSPECTION HATCH 83 (Ø630/630) (SEE FIG. A)
- INSPECTION HATCH 84 (Ø630/630) (SEE FIG. A)
- INSPECTION HATCH 85 (Ø630/630) (SEE FIG. A)
- INSPECTION HATCH 86 (Ø630/630) (SEE FIG. A)
- INSPECTION HATCH 87 (Ø630/630) (SEE FIG. A)
- INSPECTION HATCH 88 (Ø630/630) (SEE FIG. A)
- INSPECTION HATCH 89 (Ø630/630) (SEE FIG. A)
- INSPECTION HATCH 90 (Ø630/630) (SEE FIG. A)
- INSPECTION HATCH 91 (Ø630/630) (SEE FIG. A)
- INSPECTION HATCH 92 (Ø630/630) (SEE FIG. A)
- INSPECTION HATCH 93 (Ø630/630) (SEE FIG. A)
- INSPECTION HATCH 94 (Ø630/630) (SEE FIG. A)
- INSPECTION HATCH 95 (Ø630/630) (SEE FIG. A)
- INSPECTION HATCH 96 (Ø630/630) (SEE FIG. A)
- INSPECTION HATCH 97 (Ø630/630) (SEE FIG. A)
- INSPECTION HATCH 98 (Ø630/630) (SEE FIG. A)
- INSPECTION HATCH 99 (Ø630/630) (SEE FIG. A)
- INSPECTION HATCH 100 (Ø630/630) (SEE FIG. A)