

### PROJECT NAME:

Location:	Approval:
Engineer:	Date:
Submitted to:	Construction:
Submitted by:	Unit #:
Reference:	Drawing #:

### FEATURES AND BENEFITS

#### Installation flexibility

Slim design

- With a height of only 300 mm, installation is possible even in buildings with narrow ceiling spaces.

Standard DC drain pump

- DC drain pump is equipped as standard accessory with 700 mm lift.

Bottom suction possible

- Bottom suction is possible which facilitate installation and maintenance. Wiring connections and maintenance of control box can be done from under the unit with an optional shield plate for side plate\* extending the degree of freedom for installation in the ceiling.

#### Design flexibility

Adjustable external static pressure

- Using a DC fan motor, the external static pressure can be controlled within a range of 30 Pa\* to 200 Pa\*.

Comfortable airflow is achieved in accordance with conditions such as duct length.

#### Comfort

Switchable airflow rate

- Control of the airflow rate can be selected from 3-step control.

Auto airflow rate

- 5-step airflow rate is automatically controlled in accordance with the difference between room temperature and set temperature.

Auto airflow rate control can be selected with wired remote controller BRC1E63 and BRC2E61.

### EXTERNAL APPEARANCE



R-410A

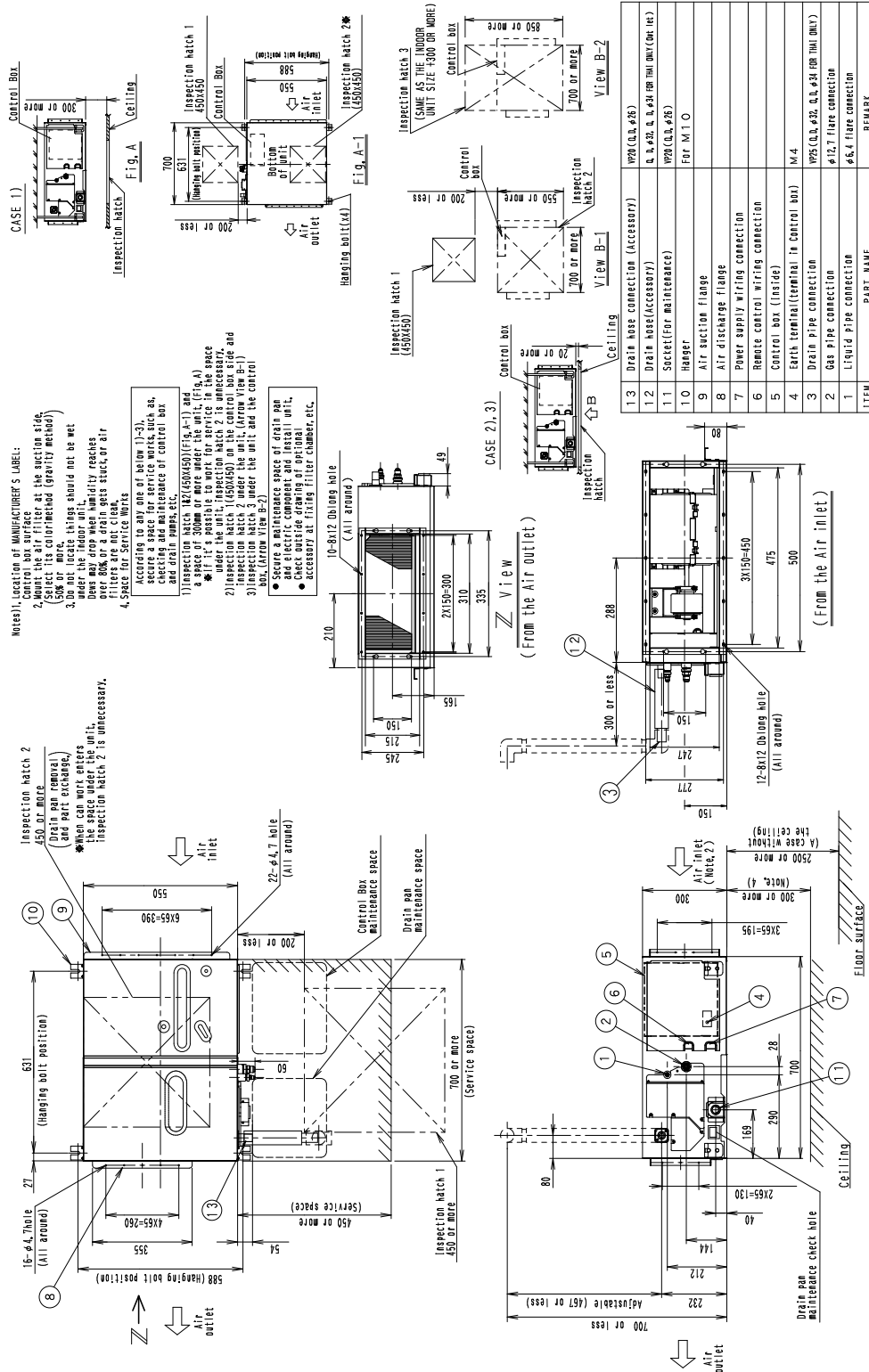
### SPECIFICATIONS

Model			FXMQ20PAVE		
Power supply			1 phase, 220-240/220 V, 50/60 Hz		
*1 *3 Cooling capacity			kcal/h	1,900	
			Btu/h	7,500	
			kW	2.2	
*2 *3 Heating capacity			kcal/h	2,200	
			Btu/h	8,500	
			kW	2.5	
*7 Power input	Cooling	50 Hz	kW	0.056	
		60 Hz	kW	0.056	
	Heating	50 Hz	kW	0.044	
		60 Hz	kW	0.044	
Casing / Colour			Galvanized steel plate		
Dimensions: (H×W×D)			mm	300×550×700	
Coil (Cross fin coil)	Rows × Stages × Fin pitch		mm	3×16×1.75	
	Face area		m <sup>2</sup>	0.098	
Fan	Model		—		
	Type		Sirocco fan		
	Motor output × Number of units		W	90×1	
	Airflow rate (HH/H/L)			m <sup>3</sup> /min	9/7.5/6.5
				l/s	150/125/108
				cfm	318/265/230
External static pressure		Pa	Rated 50 (100-30 *4)		
Drive		Direct drive			
Temperature control			Microprocessor thermostat for cooling and heating		
Air filter			— *5		
Piping connections	Liquid pipes		mm	φ6.4 (Flare connection)	
	Gas pipes		mm	φ12.7 (Flare connection)	
	Drain pipe		mm	VP25 (External dia. 32) Internal dia. 25	
Mass			kg	25	
*6 Sound pressure level (HH/H/L)			dB(A)	33/31/29	
Sound power level (H)			dB	51	
Safety devices			Fuse, Fan driver overload protector		
Refrigerant control			Electronic expansion valve		
Standard accessories			Operation manual, Installation manual, Drain hose, Sealing pads, Clamps, Washers, Screws, Insulation for fitting, Clamp metal, Air discharge flange, Air suction flange		
Drawing No.	Specification		C: 3D105230B		
	Sound level		C: 4D062535A		
<p><b>Notes:</b></p> <p>*1. Indoor temp.: 27°CDB, 19°CWB / outdoor temp.: 35°CDB / Rated external static pressure / Equivalent piping length: 7.5 m, level difference: 0 m.</p> <p>*2. Indoor temp.: 20°CDB / outdoor temp.: 7°CDB, 6°CWB / Rated external static pressure / Equivalent piping length: 7.5 m, level difference: 0 m.</p> <p>*3. Capacities are net, including a deduction for cooling (an addition for heating) for indoor fan motor heat.</p> <p>*4. External static pressure is changeable in 7 stages (FXMQ20/25/32PAVE), 13 stages (FXMQ40PAVE), 14 stages (FXMQ50/63/80/100/125PAVE), 10 stages (FXMQ140PAVE) within the ( ) range by remote controller.</p> <p>*5. Air filter is not standard accessory, but please mount it in the duct system of the suction side. Select its dust collection efficiency (gravity method) 50% or more.</p> <p>*6. Anechoic chamber conversion value, measured at a point 1.5 m downward from the unit center. During actual operation, these values are normally somewhat higher as a result of ambient conditions.</p> <p>*7. Power input values are based on conditions of rated external static pressure.</p> <p>8. Refer to <b>Electric Characteristics</b> for the power input when the airflow rate is maximum at maximum external static pressure.</p>					

## DIMENSIONS

## MODEL: MIDDLE STATIC DUCTED 50/60 Hz - FXMQ20PAVE

Unit: mm



3D105236A