

PROJECT NAME:

Location:	Approval:
Engineer:	Date:
Submitted to:	Construction:
Submitted by:	Unit #:
Reference:	Drawing #:

FEATURES AND BENEFITS

Design flexibility

Ajustable external static pressure

- Using a DC fan motor, the external static pressure can be controlled within a range of 50 Pa to 250 Pa.

Compact design

- Light weight by changing copper tube diameter of heat exchanger from $\phi 8$ to $\phi 7$ mm.

Easy Installation

Airflow rate auto adjustment function

- During installation, even if the external static pressure changes due to a change in the duct route, the airflow can be automatically adjusted to within the unit's external static pressure range.

- Airflow rate can be controlled using a remote controller during test operation. It is automatically adjusted to the range between approximately #10 % of the rated H tap airflow.

Built-in pre-filter slot

- To cater for easy installation of filter at site, a filter rail is available at the return flange.

Drain pump kit (optional)

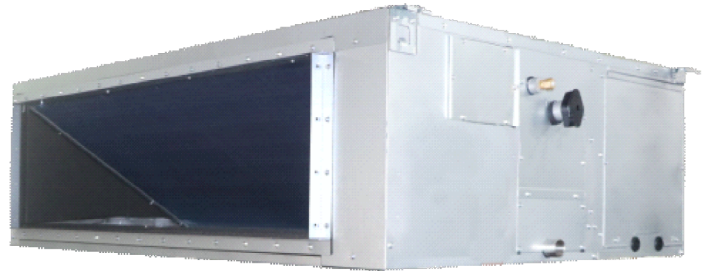
- Steeper gradient realizes more efficient condensate drainage. High-lift is especially useful for long length of drain piping. Drain pump is offered as optional accessory with 750 mm lift.

Easy maintenance

- Inspection and cleaning is facilitated by separating the inspection opening and the drain pan maintenance check hole.

- Heat exchanger, drain pan and fan deck can be easily accessed and removed from bottom for maintenance.

EXTERNAL APPEARANCE



R-410A

SPECIFICATIONS

Model		FXMQ250PVM		
Power supply		1 phase, 220-240/220-230 V, 50/60 Hz		
*1 *3 Cooling capacity	kcal/h	24,100		
	Btu/h	95,500		
	kW	28.0		
*2 *3 Heating capacity	kcal/h	27,100		
	Btu/h	107,500		
	kW	31.5		
*7 Power input	Cooling	kW	0.67	
	Heating	kW	0.65	
Casing / Colour		Galvanized steel plate		
Dimensions: (H×W×D)		mm	470×1,490×1,100	
Fan	Model		KH9X9-PR708	
	Type		Sirocco fan	
	Motor output × Number of units		W	750 × 1
	Airflow rate (HH/H/L)	m ³ /min		84/71/58
		l/s		1,400/1,183/967
		cfm		2,965/2,506/2,047
	External static pressure		Pa	Rated 150 (250-50) *4
Drive		Direct drive		
Temperature control		Microprocessor thermostat for cooling and heating		
Air filter		—*5		
Piping connections	Liquid	mm	9.5 (Flare connection)	
	Gas	mm	22.2 (Flange connection)	
	Drain	BSP 1 inch internal thread		
Mass		kg	105	
*6 Sound pressure level (HH/H/L)		dB(A)	44/40/37	
Safety devices		Fuse, Fan driver overload protector		
Refrigerant control		Electronic expansion valve		
Standard accessories		Operation manual, Installation manual, Connection pipe with flange, Screws, Clamps		
Drawing No.	Specification		C: 3D117713B	
	Sound level		C: 3D118342	
<p>Notes:</p> <p>*1. Indoor temp.: 27°CDB, 19°CWB / Outdoor temp.: 35°CDB / Rated external static pressure / Equivalent piping length: 7.5 m, level difference: 0 m.</p> <p>*2. Indoor temp.: 20°CDB / Outdoor temp.: 7°CDB, 6°CWB / Rated external static pressure / Equivalent piping length: 7.5 m, level difference: 0 m.</p> <p>*3. Capacities are net, including a deduction for cooling (an addition for heating) for indoor fan motor heat.</p> <p>*4. External static pressure is changeable in 15 stages within the () range by remote controller.</p> <p>*5. Pre-filter is an optional accessory. There is a slot for pre-filter at the suction flange. Other type of filter is not standard accessory, but please mount it in the duct system of the suction side. Select its dust collection efficiency (gravity method) 50% or more.</p> <p>*6. Anechoic chamber conversion value, measured at a point 1.5 m downward from the unit centre. These values are normally somewhat higher during actual operation as a result of ambient conditions.</p> <p>*7. Power input values are based on conditions of rated external static pressure.</p> <p>8. Refer to Electric Characteristics for the power input when the airflow rate is maximum at maximum external static pressure.</p>				

DIMENSIONS

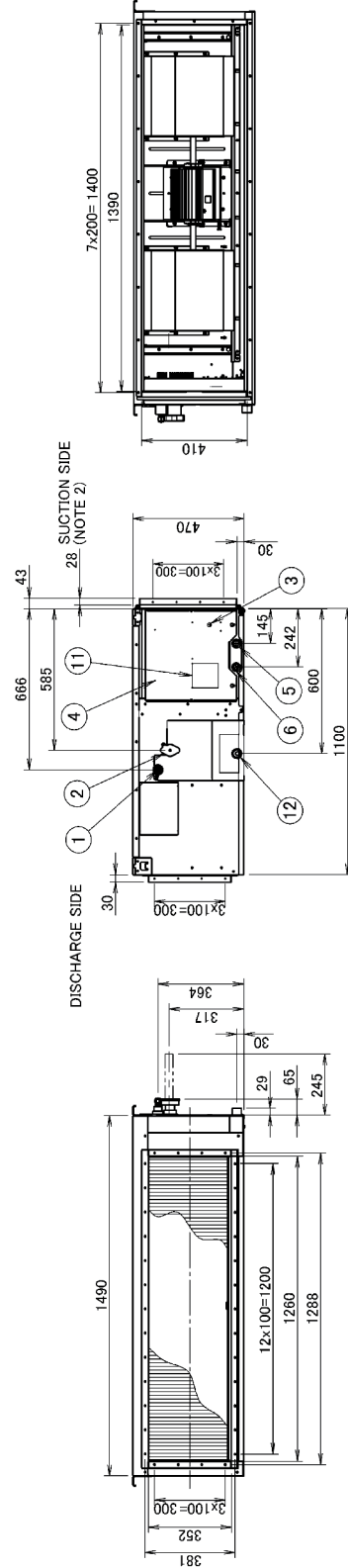
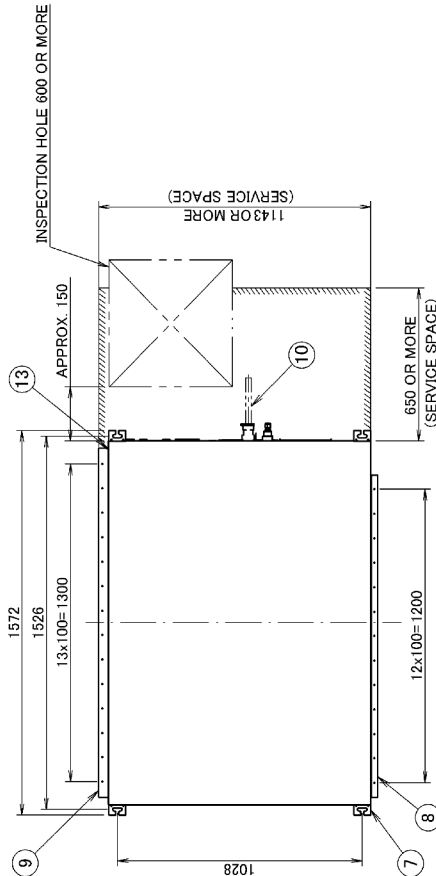
MODEL: HIGH STATIC DUCTED 50/60 Hz - FXMQ250PVM

Unit: mm

Piping size (Field supply)	
Indoor unit	Liquid side
FXMQ250PVM	Ø 9.5
	Gas side
	Ø 22.2 attached piping

- Notes:
- Location of unit's Manufacturer's label: Control box surface.
 - Mount the air filter at the suction side.
 - Select its dust collection efficiency (gravity method) 50% or more.)

Number	Name	Description
13	Pre-filter service cover	
12	Drain piping connection	BSP 1 inch Internal thread
11	Manufacturer's Label	Major dia. Ø33.3 Minor dia. Ø30.3
10	Attached piping	Brazing
9	Suction flange	
8	Discharge flange	
7	Hook	M10
6	Transmission wiring connection	
5	Power supply wiring connection	
4	Control box	
3	Ground terminal	M5 (Inside control box)
2	Gas pipe connection	Attendant piping connection
1	Liquid pipe connection	Flare connection



3D121335