

### PROJECT NAME:

|               |               |
|---------------|---------------|
| Location:     | Approval:     |
| Engineer:     | Date:         |
| Submitted to: | Construction: |
| Submitted by: | Unit #:       |
| Reference:    | Drawing #:    |

### FEATURES AND BENEFITS

#### Installation flexibility

Slim design

- With a height of only 300 mm, installation is possible even in buildings with narrow ceiling spaces.

Standard DC drain pump

- DC drain pump is equipped as standard accessory with 700 mm lift.

Bottom suction possible

- Bottom suction is possible which facilitate installation and maintenance. Wiring connections and maintenance of control box can be done from under the unit with an optional shield plate for side plate\* extending the degree of freedom for installation in the ceiling.

#### Design flexibility

Adjustable external static pressure

- Using a DC fan motor, the external static pressure can be controlled within a range of 30 Pa\* to 200 Pa\*.

Comfortable airflow is achieved in accordance with conditions such as duct length.

#### Comfort

Switchable airflow rate

- Control of the airflow rate can be selected from 3-step control.

Auto airflow rate

- 5-step airflow rate is automatically controlled in accordance with the difference between room temperature and set temperature.

Auto airflow rate control can be selected with wired remote controller BRC1E63 and BRC2E61.

### EXTERNAL APPEARANCE



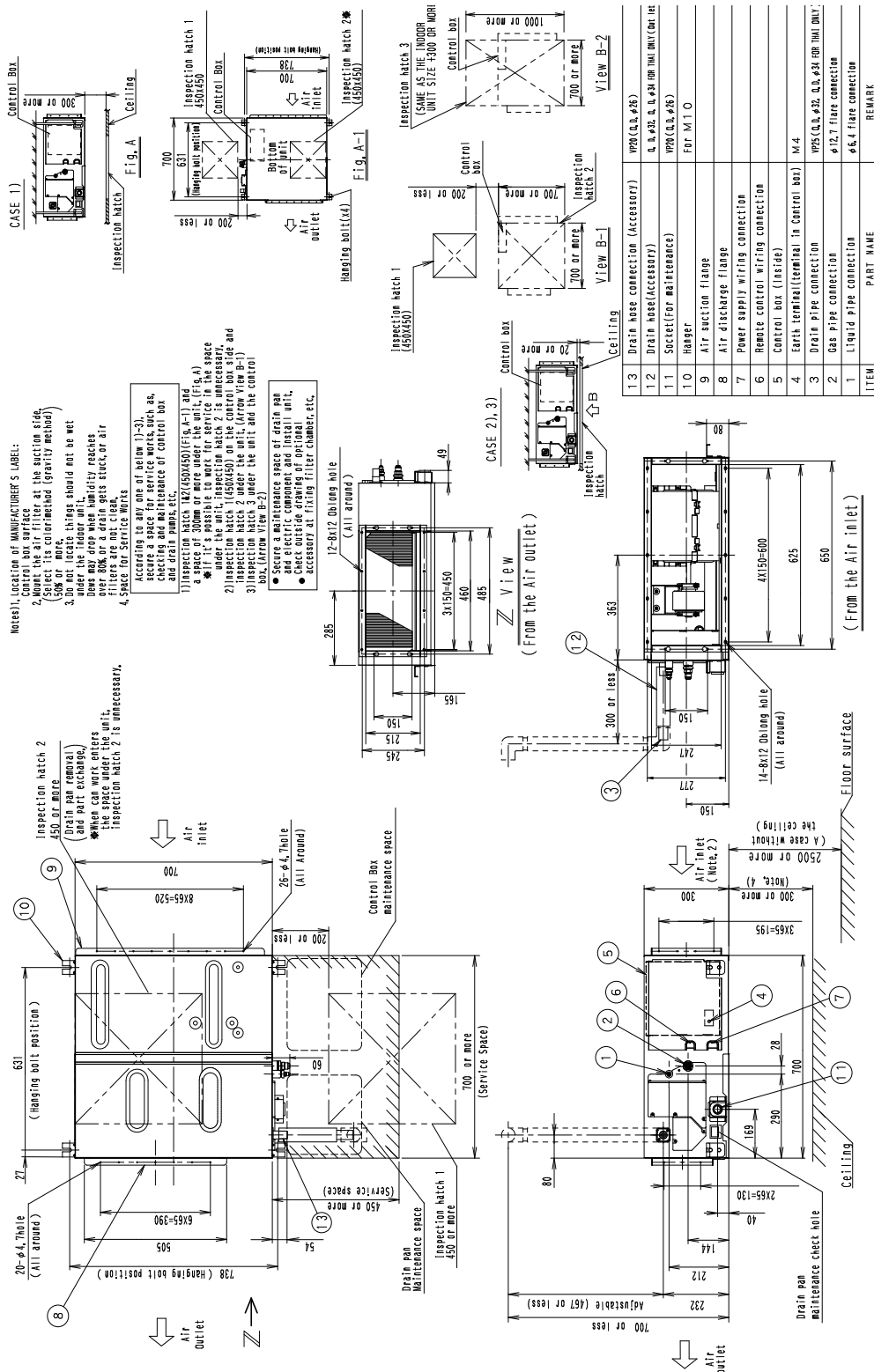
R-410A

### SPECIFICATIONS

| Model  |                                |              | FXMQ40PAVE  |  |             |
|--|--------------------------------|--------------|---|--|-------------|
| Power supply   |                                |              | 1 phase, 220-240/220 V, 50/60 Hz  |  |             |
| *1 *3 Cooling capacity   |                                |              | kcal/h  | 3,900                                    |             |
|  |                                |              | Btu/h   | 15,400                                   |             |
|  |                                |              | kW  | 4.5                                      |             |
| *2 *3 Heating capacity   |                                |              | kcal/h  | 4,300                                    |             |
|  |                                |              | Btu/h   | 17,100                                   |             |
|  |                                |              | kW  | 5.0                                      |             |
| *7 Power input   | Cooling                        | 50 Hz        | kW  | 0.151                                    |             |
|  |                                | 60 Hz        | kW  | 0.150                                    |             |
|  | Heating                        | 50 Hz        | kW  | 0.139                                    |             |
|  |                                | 60 Hz        | kW  | 0.139                                    |             |
| Casing / Colour  |                                |              | Galvanized steel plate  |  |             |
| Dimensions: (H×W×D)  |                                |              | mm  | 300×700×700                              |             |
| Coil (Cross fin coil)  | Rows × Stages × Fin pitch      |              | mm  | 3×16×1.75                                |             |
|  | Face area                      |              | m <sup>2</sup>  | 0.148                                    |             |
| Fan  | Model                          |              |   | —  |             |
|  | Type                           |              |   | Sirocco fan                              |             |
|  | Motor output × Number of units |              | W   | 140×1                                    |             |
|  | Airflow rate (HH/H/L)          |              |   | m <sup>3</sup> /min                      | 16/13/11    |
|  |                                |              |   | l/s                                      | 267/216/183 |
|  |                                |              |   | cfm                                      | 565/459/388 |
|  | External static pressure       |              | Pa  | Rated 100 (160-30 *4)                    |             |
| Drive  |                                | Direct drive |   |  |             |
| Temperature control  |                                |              | Microprocessor thermostat for cooling and heating   |  |             |
| Air filter   |                                |              | — *5  |  |             |
| Piping connections   | Liquid pipes                   |              | mm  | φ6.4 (Flare connection)                  |             |
|  | Gas pipes                      |              | mm  | φ12.7 (Flare connection)                 |             |
|  | Drain pipe                     |              | mm  | VP25 (External dia. 32) Internal dia. 25 |             |
| Mass   |                                |              | kg  | 27                                       |             |
| *6 Sound pressure level (HH/H/L)   |                                |              | dB(A)   | 39/37/35                                 |             |
| Sound power level (H)  |                                |              | dB  | 57                                       |             |
| Safety devices   |                                |              | Fuse, Fan driver overload protector   |  |             |
| Refrigerant control  |                                |              | Electronic expansion valve  |  |             |
| Standard accessories   |                                |              | Operation manual, Installation manual, Drain hose, Sealing pads, Clamps, Washers, Screws, Insulation for fitting, Clamp metal, Air discharge flange, Air suction flange |  |             |
| Drawing No.  | Specification                  |              | C: 3D105230B  |  |             |
|  | Sound level                    |              | C: 4D060446C  |  |             |
| <p><b>Notes:</b></p> <p>*1. Indoor temp.: 27°CDB, 19°CWB / outdoor temp.: 35°CDB / Rated external static pressure / Equivalent piping length: 7.5 m, level difference: 0 m.</p> <p>*2. Indoor temp.: 20°CDB / outdoor temp.: 7°CDB, 6°CWB / Rated external static pressure / Equivalent piping length: 7.5 m, level difference: 0 m.</p> <p>*3. Capacities are net, including a deduction for cooling (an addition for heating) for indoor fan motor heat.</p> <p>*4. External static pressure is changeable in 7 stages (FXMQ20/25/32PAVE), 13 stages (FXMQ40PAVE), 14 stages (FXMQ50/63/80/100/125PAVE), 10 stages (FXMQ140PAVE) within the ( ) range by remote controller.</p> <p>*5. Air filter is not standard accessory, but please mount it in the duct system of the suction side. Select its dust collection efficiency (gravity method) 50% or more.</p> <p>*6. Anechoic chamber conversion value, measured at a point 1.5 m downward from the unit center. During actual operation, these values are normally somewhat higher as a result of ambient conditions.</p> <p>*7. Power input values are based on conditions of rated external static pressure.</p> <p>*8. Refer to <b>Electric Characteristics</b> for the power input when the airflow rate is maximum at maximum external static pressure.</p> |                                |              |   |  |             |

### DIMENSIONS

Unit: m



3D105231