

### PROJECT NAME:

Location:	Approval:
Engineer:	Date:
Submitted to:	Construction:
Submitted by:	Unit #:
Reference:	Drawing #:

### FEATURES AND BENEFITS

#### Installation flexibility

Slim design

- With a height of only 300 mm, installation is possible even in buildings with narrow ceiling spaces.

Standard DC drain pump

- DC drain pump is equipped as standard accessory with 700 mm lift.

Bottom suction possible

- Bottom suction is possible which facilitate installation and maintenance. Wiring connections and maintenance of control box can be done from under the unit with an optional shield plate for side plate\* extending the degree of freedom for installation in the ceiling.

#### Design flexibility

Adjustable external static pressure

- Using a DC fan motor, the external static pressure can be controlled within a range of 30 Pa\* to 200 Pa\*.

Comfortable airflow is achieved in accordance with conditions such as duct length.

#### Comfort

Switchable airflow rate

- Control of the airflow rate can be selected from 3-step control.

Auto airflow rate

- 5-step airflow rate is automatically controlled in accordance with the difference between room temperature and set temperature.

Auto airflow rate control can be selected with wired remote controller BRC1E63 and BRC2E61.

### EXTERNAL APPEARANCE



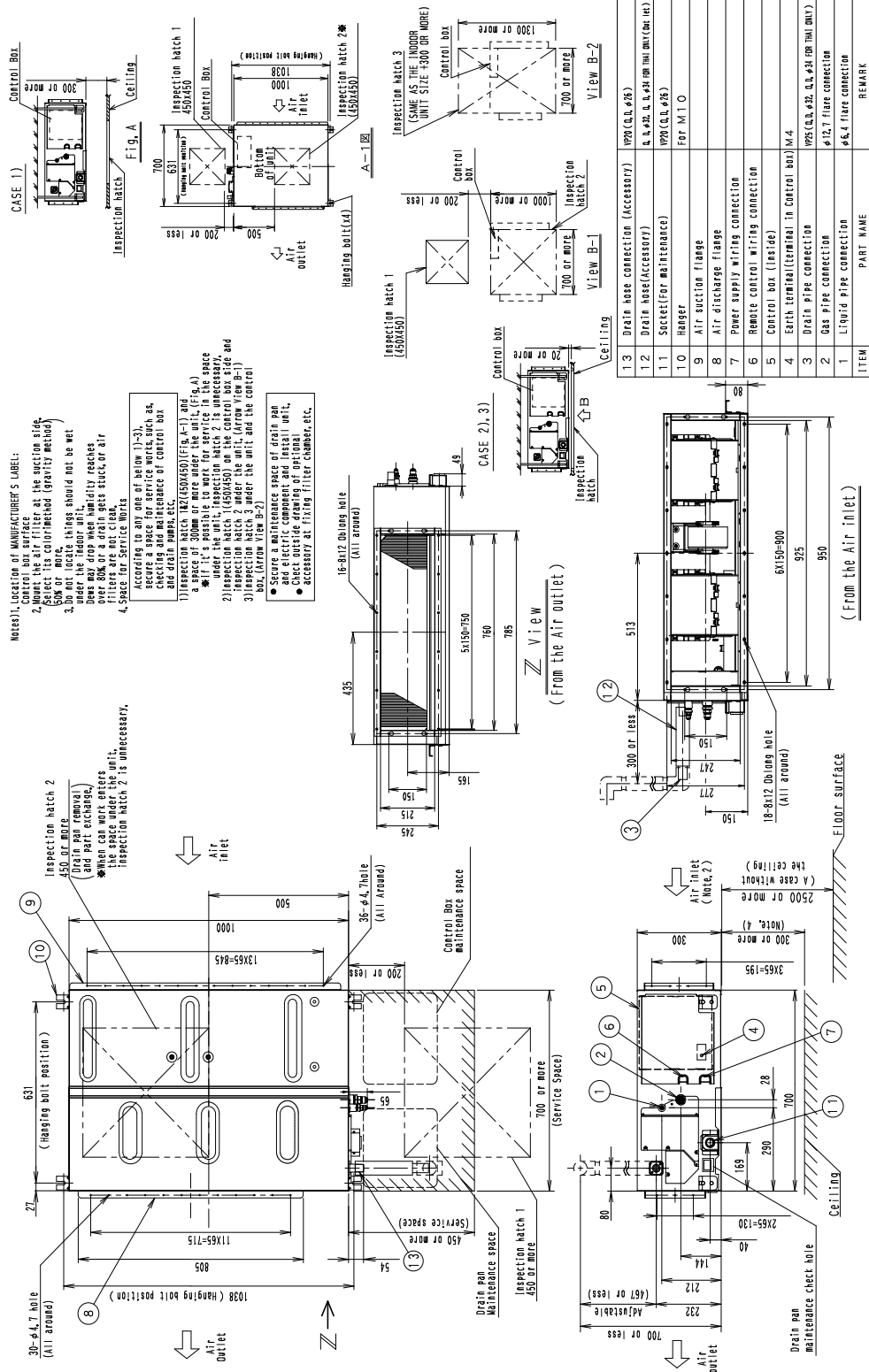
R-410A

### SPECIFICATIONS

Model			FXMQ50PAVE	
Power supply			1 phase, 220-240/220 V, 50/60 Hz	
*1 *3 Cooling capacity		kcal/h	4,800	
		Btu/h	19,100	
		kW	5.6	
*2 *3 Heating capacity		kcal/h	5,400	
		Btu/h	21,500	
		kW	6.3	
*7 Power input	Cooling	50 Hz	kW	0.128
		60 Hz	kW	0.127
	Heating	50 Hz	kW	0.116
		60 Hz	kW	0.116
Casing / Colour			Galvanized steel plate	
Dimensions: (H×W×D)			mm	300×1,000×700
Coil (Cross fin coil)	Rows × Stages × Fin pitch	mm	3×16×1.75	
	Face area	m <sup>2</sup>	0.249	
Fan	Model	—		
	Type	Sirocco fan		
	Motor output × Number of units	W	350×1	
	Airflow rate (HH/H/L)	m <sup>3</sup> /min	18/16.5/15	
		l/s	300/275/250	
		cfm	635/582/530	
External static pressure	Pa	Rated 100 (200-50 *4)		
Drive	Direct drive			
Temperature control			Microprocessor thermostat for cooling and heating	
Air filter			— *5	
Piping connections	Liquid pipes	mm	φ6.4 (Flare connection)	
	Gas pipes	mm	φ12.7 (Flare connection)	
	Drain pipe	mm	VP25 (External dia. 32) Internal dia. 25	
Mass			kg	35
*6 Sound pressure level (HH/H/L)			dB(A)	41/39/37
Sound power level (H)			dB	59
Safety devices			Fuse, Fan driver overload protector	
Refrigerant control			Electronic expansion valve	
Standard accessories			Operation manual, Installation manual, Drain hose, Sealing pads, Clamps, Washers, Screws, Insulation for fitting, Clamp metal, Air discharge flange, Air suction flange	
Drawing No.	Specification	C: 3D105230B		
	Sound level	C: 4D060428C		
<p><b>Notes:</b></p> <p>*1. Indoor temp.: 27°CDB, 19°CWB / outdoor temp.: 35°CDB / Rated external static pressure / Equivalent piping length: 7.5 m, level difference: 0 m.</p> <p>*2. Indoor temp.: 20°CDB / outdoor temp.: 7°CDB, 6°CWB / Rated external static pressure / Equivalent piping length: 7.5 m, level difference: 0 m.</p> <p>*3. Capacities are net, including a deduction for cooling (an addition for heating) for indoor fan motor heat.</p> <p>*4. External static pressure is changeable in 7 stages (FXMQ20/25/32PAVE), 13 stages (FXMQ40PAVE), 14 stages (FXMQ50/63/80/100/125PAVE), 10 stages (FXMQ140PAVE) within the ( ) range by remote controller.</p> <p>*5. Air filter is not standard accessory, but please mount it in the duct system of the suction side. Select its dust collection efficiency (gravity method) 50% or more.</p> <p>*6. Anechoic chamber conversion value, measured at a point 1.5 m downward from the unit center. During actual operation, these values are normally somewhat higher as a result of ambient conditions.</p> <p>*7. Power input values are based on conditions of rated external static pressure.</p> <p>*8. Refer to <b>Electric Characteristics</b> for the power input when the airflow rate is maximum at maximum external static pressure.</p>				

### DIMENSIONS

Unit: mm



ITEM	PART NAME	REMARK
1	Liquid pipe connection	φ6.4 flare connection
2	Gas pipe connection	φ12.7 flare connection
3	Drain pipe connection	φ12.7 flare connection
4	Earth terminal (terminal in control box) M4	
5	Control box (inside)	
6	Remote control wiring connection	
7	Power supply wiring connection	
8	Air suction flange	
9	Air discharge flange	
10	Hanger	FOR M.T.O
11	Socket (for maintenance)	φ20 (Q.L. φ8)
12	Drain hose (accessory)	φ16 (Q.L. φ8) or φ18 (FOR THRU UNIT UNIT)
13	Drain hose connection (Accessory)	φ20 (Q.L. φ8)

3D105232A