

**PROJECT NAME:**

Location:	Approval:
Engineer:	Date:
Submitted to:	Construction:
Submitted by:	Unit #:
Reference:	Drawing #:

### FEATURES AND BENEFITS

#### Slim & compact design

The new design has been optimised for the VRV IV S series, with the height of 6 HP models reduced to only 990 mm. This design gives the building a sleek look externally and provides the occupants with a clear, unobstructed view of the scenery.

The VRV IV S series is now slim and compact, with outdoor units that require minimal installation space.

#### High Energy Efficiency Ratio (EER)

VRV IV S series provides greater energy saving as compared to VRV III S series.

#### Nighttime quiet operation function

The nighttime quiet operation function automatically suppresses the nighttime operating sound by reducing operation capacity to maintain the quiet environment of the neighborhood. Three selectable modes are available depending on the required level. This function is suitable for use in residential areas.

#### Swing compressor

Daikin swing compressor has integrated the rotor with the blade, completely solving the refrigerant leakage and the wear problem caused by the mechanical friction between the rotor and the blade, which enhances the compressor efficiency and makes the compressor more quiet and durable.

#### Smooth air inlet bell mouth and aero spiral fan

These two features work to reduce sound. Guides are added to the bell mouth intake to reduce turbulence in the airflow generated by fan suction. The Aero Spiral Fan features fan blades with the bent blade edges, further reducing turbulence.

#### DC fan motor

Efficiency improved in all areas compared to conventional AC motors, especially at low speeds.

### EXTERNAL APPEARANCE

## VRV IV S SERIES

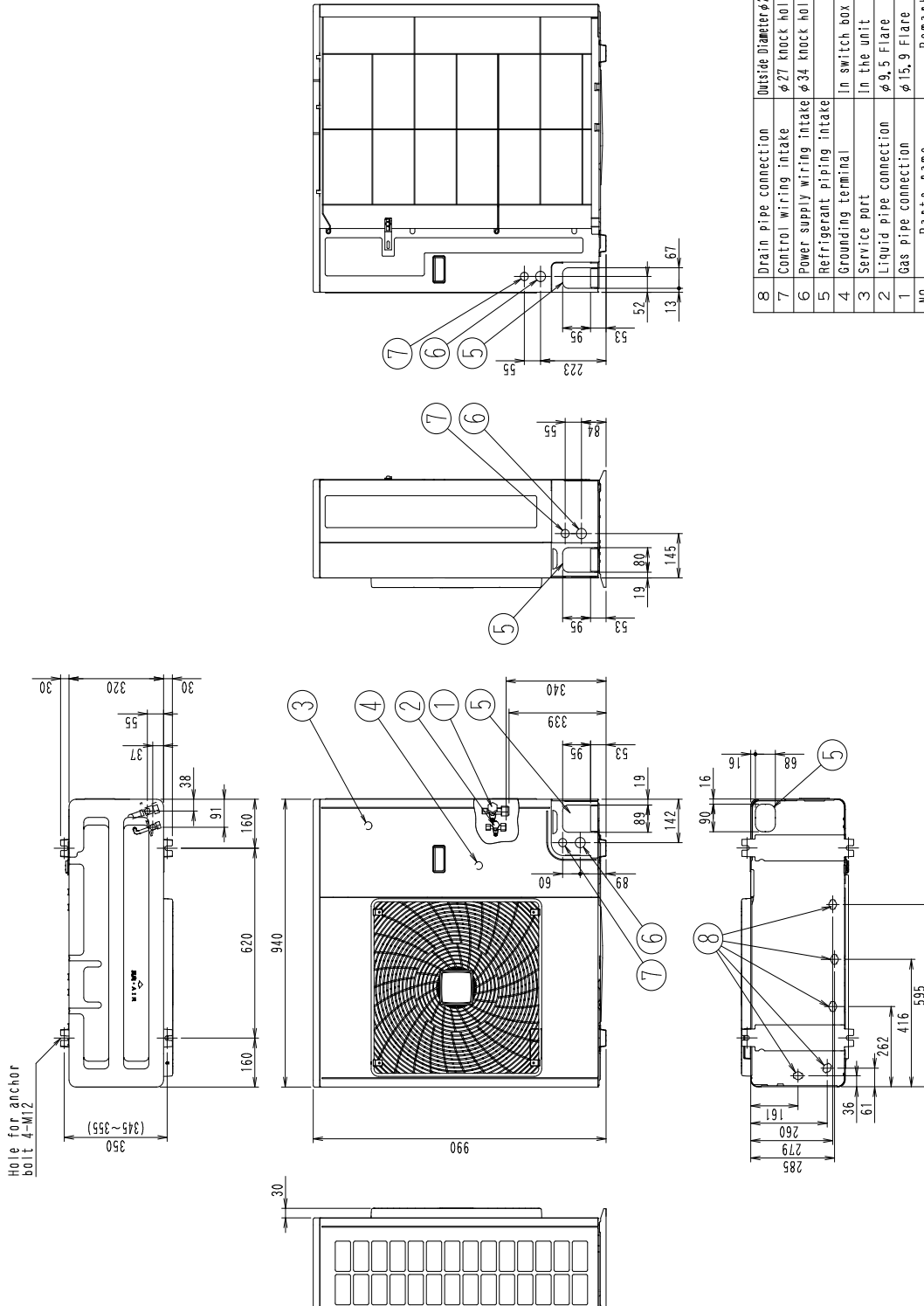


Model		RXYMQ4AVE	
Power supply		1 phase, 220-230/220 V, 50/60 Hz	
*1 Cooling capacity	kcal/h	9,600	
	Btu/h	38,200	
	kW	11.2	
*2 Heating capacity	kcal/h	10,800	
	Btu/h	42,700	
	kW	12.5	
Casing color		Ivory white	
Dimensions: (HxWxD)		mm	990x940x320
Heat exchanger		Cross fin coil	
Compressor	Type	Hermetically sealed swing type	
	Motor output	kW	1.92
	Starting method		Soft start
Fan	Type	Propeller fan	
	Motor output	W	200
	Airflow rate	m <sup>3</sup> /min	76
	Drive		Direct drive
Connecting pipes	Liquid pipe	mm	φ9.5 (Flare connection)
	Gas pipe	mm	φ15.9 (Flare connection)
Mass		kg	71
*3 Sound pressure level	Cooling	dB(A)	52
	Heating	dB(A)	54
Safety devices		High pressure switch, Fan driver overload protector, Inverter overload protector, Fuse, Fusible plugs	
Defrost method		Reverse cycle defrosting	
Capacity control		%	24-100
Refrigerant	Refrigerant name		R410A
	Charge	kg	2.9
	Control		Electronic expansion valve
Refrigerator oil		Refer to the nameplate of compressor	
Standard accessories		Installation manuals, Operation manual, Clamps	
Drawing No.	Specifications		C: 4D090309E
	Sound level	Cooling	C: 4D091258A
		Heating	C: 4D091259
<p><b>Notes:</b></p> <p>*1. Indoor temp.: 27°CDB, 19°CWB / outdoor temp.: 35°CDB / Equivalent piping length: 7.5 m, level difference: 0 m. *2. Indoor temp.: 20°CDB / outdoor temp.: 7°CDB, 6°CWB / Equivalent piping length: 7.5 m, level difference: 0 m. *3. Anechoic chamber conversion value, measured at a point 1 m in front of the unit at a height of 1.5 m.</p> <p>During actual operation, these values are normally somewhat higher as a result of ambient conditions and oil recovery mode.</p> <p>When there is concern for noise the surrounding area such as residences, we recommend investigating the installation location and taking soundproofing measures.</p>			

## DIMENSIONS

### MODEL: HEAT PUMP 50/60 Hz VRV IV S SERIES - RXYMQ4AVE

Unit: mm



NO.	Parts name	Remarks
8	Drain pipe connection	Outside Diameter $\phi$ 26 3spot
7	Control wiring intake	$\phi$ 27 knock hole
6	Power supply wiring intake	$\phi$ 34 knock hole
5	Refrigerant piping intake	In switch box (M5)
4	Grounding terminal	In the unit
3	Service port	$\phi$ 9.5 Flare
2	Liquid pipe connection	$\phi$ 15.9 Flare
1	Gas pipe connection	$\phi$ 15.9 Flare

3D075986H