

SUBMITTAL DATA SHEET

MODEL: 1-WAY CASSETTE 60 Hz - FXEQ15PVJU

PROJECT NAME:

Location:	Approval:
Engineer:	Date:
Submitted to:	Construction:
Submitted by:	Unit #:
Reference:	Drawing #:

FEATURES AND BENEFITS

Units are "Cassette" decorative ceiling type, manufactured in high impact PVC and supplied in one color. The air flow is on One Way Blow, unidirectional, cool white, impact resistant type of air distribution with a washable panel. Supplied air is distributed through motorized vertical and horizontal louvers that can be adjusted from 0° to 45° and 20° to 70° respectively. Computerized PID control is used to control overheating to provide a comfortable room temperature. The unit is equipped with a programmed drying mechanism that dehumidifies by limiting changes in room temperature when used with the Daikin BRC1E62 remote control. The sound pressure of the indoor units are on the range from 26 dB (A) to 38 dB (A) at low speed measured at a maximum of 1 meter below the unit.

The evaporator units that serve individual offices will each have their own remote control wired to the wall at 1.6 meters above the floor, there will also be a central remote control from which all the indoor units will be operated.

Open spaces that are served by several units will be managed from a central group control.

EXTERNAL APPEARANCE

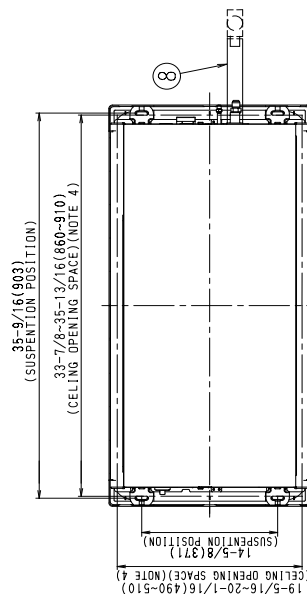
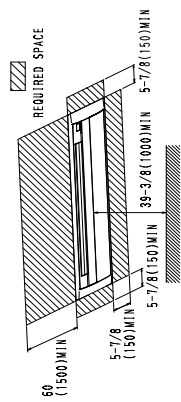
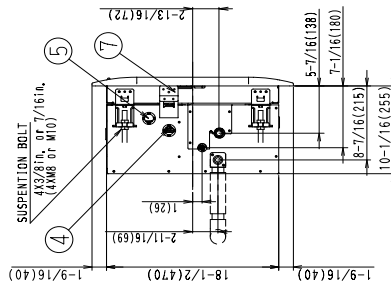
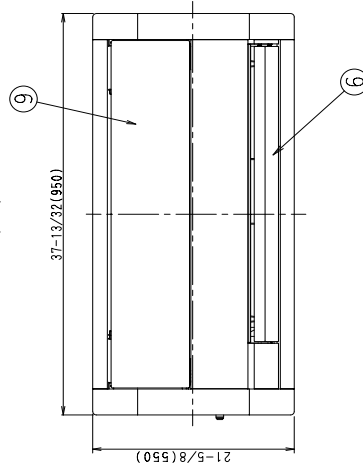
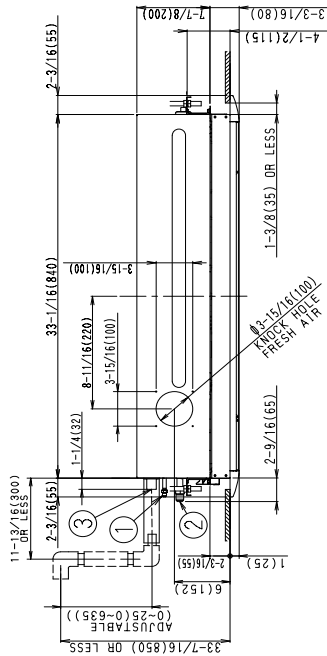


SPECIFICATIONS

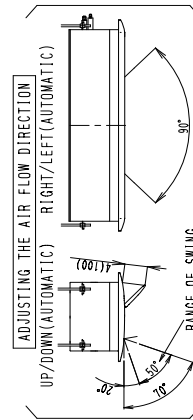
Model		FXEQ15PVJU		
Power supply		1 phase, 60Hz, 208/230V		
*1 *3 Cooling capacity	Btu/h (kW)	15,000 (4.4)		
*2 *3 Heating capacity	Btu/h (kW)	17,000 (5.0)		
Casing / Color		Galvanized steel plate		
Dimensions: (HxWxD)		in. (mm)	7-7/8x18-1/2x33-1/16 (200x470x840)	
Coil (Cross fin coil)	RowsxStagesxFPI	2x14x20.5+1x8x15.9		
	Face area	ft ² (m ²)	1.70 (0.158)	
Fan	Type	Sirocco fan		
	Motor output	W	87	
	Air flow rate (Dry coil)	Cooling (H/HM/M/ ML/L)	cfm (m ³ /min)	346/311/276/247/219 (9.8/8.8/7.8/7.0/6.2)
		Heating (H/HMM/ ML/L)	cfm (m ³ /min)	360/329/297/269/240 (10.2/9.3/8.4/7.6/6.8)
	Drive	Direct drive		
*4 Sound pressure level	Cooling (H/HMM/ ML/L)	dB (A)	38/37/35/33/31	
	Heating (H/HMM/ ML/L)	dB (A)	41/39/37/35/33	
Heat insulation		Foamed polystyrene/Foamed polyethylene		
Sound absorbing thermal insulation material		Foamed polyurethane		
Weight		Lbs (kg)	39.7 (18)	
Piping connections	Liquid pipes	in. (mm)	ϕ1/4 (ϕ6.4) (Flare connection)	
	Gas pipes	in. (mm)	ϕ1/2 (ϕ12.7) (Flare connection)	
	Drain pipe	in. (mm)	PVC26 (O.D. 1-1/32 (26)) I.D. 13/16 (20)	
Drain pump lift		in. (mm)	25 (635)	
Refrigerant control		Electronic expansion valve		
Connectable outdoor unit		R410A VRV series		
Standard accessories		Operation and installation manual, Paper pattern for installation, Drain hose sealing material, Sealing material, Accessories bag, Plain washer (M10), C tight cup screw m5 (3 kinds), Wire clamp material, Hose band, Washer fixing material, Antisweat material, Thermal insulation joint, Thermal insulation tube, Inside drain hose		
Decoration panels (Option)	Model	BYEP40AW1		
	Color	Fresh white		
	Dimensions: (HxWxD)	in. (mm)	3-3/16x21-5/8x37-13/32 (80x550x950)	
	Air filter	Resin net (with mold resistant)		
	Weight	Lbs (kg)	17.6 (8)	
Drawing No.		C: 3D098414A		
<p>Notes:</p> <p>*1. Nominal cooling capacities are based on the following conditions: Return air temperature: 80.0°FDB (26.7°CDB), 67.0°FWB (19.4°CWB) Outdoor temperature: 95.0°FDB (35.0°CDB) Equivalent ref. piping length: 25ft (7.6m) (Horizontal)</p> <p>*2. Nominal heating capacities are based on the following conditions: Return air temperature: 70.0°FDB (21.1°CDB). Outdoor temperature: 47.0°FDB (8.3°CDB), 43.0°FWB (6.1°CWB) Equivalent ref. piping length: 25ft (7.6m) (Horizontal)</p> <p>*3. Capacities are net, including a deduction for cooling (an addition for heating) for indoor fan motor heat.</p> <p>*4. Anechoic chamber conversion value, measured under JIS conditions. During actual operation, these values may be higher as a result of installation conditions.</p> <p>5. Refer to Electric Characteristics for the power input.</p>				

DIMENSIONS

Unit: in. (mm)



DECORATION PANEL
BYEP40AW1 FRESH WHITE 6, 5V 9, 5/0, 5



ITEM	PART NAME	REMARK
9	AIR-INLET	ID φ 1/25 (OUTLET)
8	DRAIN WIDE ACCESSORY	
7	FLOOR AIR-OUTLET	
6	CONNECTION WIRING / REMOTE CONTROL WIRING CONNECTION AND A UNIT WIRING CONNECTION	
5	POWER SOURCE WIRING	
4	BRAIN PIPE CONNECTION	VP26 (OD φ 1/25) / ID φ 13/16(20)
3	GAS PIPE CONNECTION	φ 7/2 (φ 12.7) (FLARE CONNECTION)
2	LIQUID PIPE CONNECTION	φ 7/4 (φ 6.4) (FLARE CONNECTION)
1		

3D098618

- Note:
- Location of unit's Name Plate
-Unit body : on the control box cover.
-decoration panel : on the panel frame at the middle of the inlet.
 - When installing an optional accessory, refer to the installation drawings.
 - When it may exceed 86°F (30°C) and RH 80% in the ceiling or fresh air is inducted into the ceiling, an additional insulation (thickness 3/8 in. (10mm) or more of glasswool or polyethylene form) is required.
 - Make sure the spacing between the ceiling and the cassette is no more than 1-3/8 in. (35mm).
MAX ceiling opening: 35-13/16 in. x 20-1/16 in. (910mm x 510mm).