

SUBMITTAL DATA SHEET

MODEL: 1-WAY CASSETTE 60 Hz - FXEQ50AVE

PROJECT NAME:

Location:	Approval:
Engineer:	Date:
Submitted to:	Construction:
Submitted by:	Unit #:
Reference:	Drawing #:

FEATURES AND BENEFITS

Units are "Cassette" decorative ceiling type, manufactured in high impact PVC and supplied in one color. The air flow is on One Way Blow, unidirectional, cool white, impact resistant type of air distribution with a washable panel. Supplied air is distributed through motorized vertical and horizontal louvers that can be adjusted from 0° to 45° and 20° to 70° respectively. Computerized PID control is used to control overheating to provide a comfortable room temperature. The unit is equipped with a programmed drying mechanism that dehumidifies by limiting changes in room temperature when used with the Daikin BRC1E62 remote control. The sound pressure of the indoor units are on the range from 26 dB (A) to 38 dB (A) at low speed measured at a maximum of 1 meter below the unit.

The evaporator units that serve individual offices will each have their own remote control wired to the wall at 1.6 meters above the floor, there will also be a central remote control from which all the indoor units will be operated.

Open spaces that are served by several units will be managed from a central group control.

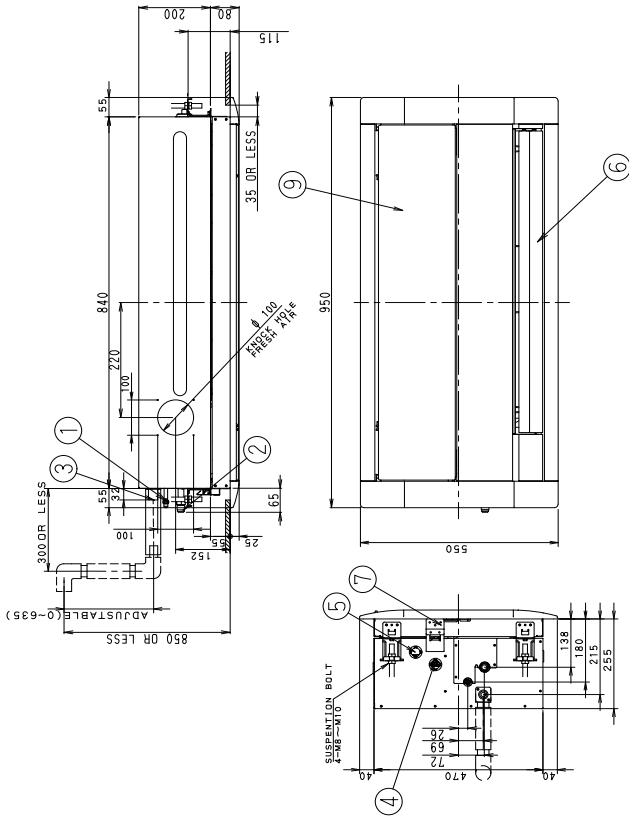
EXTERNAL APPEARANCE



SPECIFICATIONS

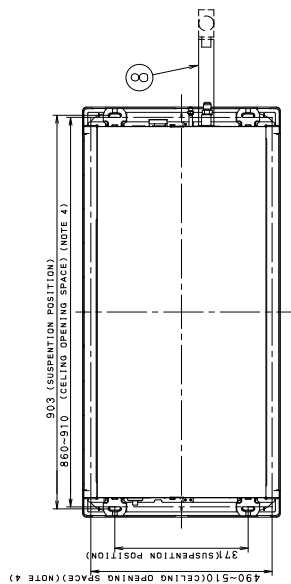
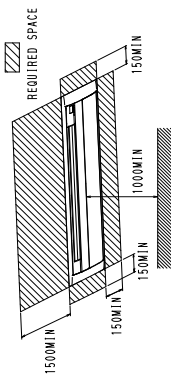
Model			FXEQ50AVE	
Power supply			1 phase, 220 V, 60 Hz	
*1 *3 Cooling capacity	kcal/h		4,800	
	Btu/h		19,100	
	kW		5.6	
*2 *3 Heating capacity	kcal/h		5,400	
	Btu/h		21,500	
	kW		6.3	
Power input	Cooling	60 Hz	kW 0.048	
	Heating	60 Hz	kW 0.067	
Casing / Colour			Galvanized steel plate	
Dimensions: (H×W×D)			mm 200×1,240×470	
Coil (Cross fin coil)	Rows × Stages × Fin pitch		mm 2×14×1.24+1×8×1.6	
	Face area		m ² 0.251	
Fan	Model		—	
	Type		Sirocco fan	
	Motor output × Number of units		W 117×1	
	Airflow rate (H/HM/ M/ ML/L)	Cooling	m ³ /min	12.5/11.4/10.4/9.5/8.7
			cfm	441/402/367/335/307
		Heating	m ³ /min	14.0/12.8/11.6/10.7/9.8
cfm			494/452/409/378/346	
Drive		Direct drive		
Sound absorbing thermal insulation material			Foamed polyurethane	
Piping connections	Liquid pipes	mm	φ6.4 (Flare connection)	
	Gas pipes	mm	φ12.7 (Flare connection)	
	Drain pipe	mm	PVC26 External dia. 26 / Internal dia. 20	
Mass			kg 23	
*4 Sound pressure level (H/HM/M/ML/L)	Cooling	dB(A)	38/37/35/33/31	
	Heating		41/39/37/36/34	
Refrigerant control			Electronic expansion valve	
Decoration panels (Option)	Model		BYEP63AW1	
	Panel colour		Fresh white	
	Dimensions: (H×W×D)		mm 80×1,350×550	
	Air filter		Resin net (with mould resistance)	
	Mass		kg 10	
Standard accessories			Operation and installation manual, Paper pattern for installation, Drain hose sealing material, Sealing material, Accessories bag, Plain washer (M10), C tight cup screw M5 (3 kinds), Wire clamp material, Hose band, Washer fixing material, Antisweat material, Thermal insulation joint, Thermal insulation tube, Inside drain hose	
Drawing No.	Specification		C: 3D084985	
	Sound level		C: 3D085032	
<p>NOTES:</p> <p>1. Indoor temp.: 27°CDB, 19°CWB / outdoor temp.: 35°CDB / Equivalent piping length: 7.5 m, level difference: 0 m.</p> <p>2. Indoor temp.: 20°CDB / outdoor temp.: 7°CDB, 6°CWB / Equivalent piping length: 7.5 m, level difference: 0 m.</p> <p>3. Capacities are net, including a deduction for cooling (an addition for heating) for indoor fan motor heat.</p> <p>4. Anechoic chamber conversion value, measured at a point 1 m in front of the unit and 1 m downward. During actual operation, these values are normally somewhat higher as a result of ambient conditions.</p>				
Conversion formulae — kcal/h=kW×860 — Btu/h=kW×3412 — cfm=m ³ /min×35.3				

DIMENSIONS

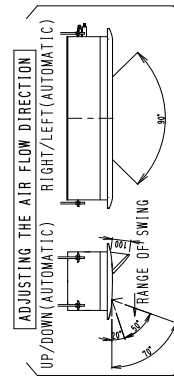


MODEL	AA	BB
FXEQ50AVE	6, 4	12, 7

ITEM	PART NAME	REMARK
9	AIR-INLET FITTING	11.4X25 (OUTLET)
8	DRAIN HOSE (ACCESSORY)	
7	AIR-OUTLET FITTING	
6	AIR-OUTLET	
5	CONNECTION WIRING / REMOTE CONTROL WIRING CONNECTION	
4	PURGE SOURCE WIRING AND T. OUT WIRING CONNECTION	
3	DRAIN PIPE CONNECTION	VP25E (Ø1.76/19.29)
2	GAS PIPE CONNECTION	Ø1.76 (19.29) FLARE CONNECTION
1	L-Ø10 PIPE CONNECTION	Ø1.76 (19.29) FLARE CONNECTION



DECORATION PANEL
BIFENAM(G) FRESH WHITE 6.51/6.5/6.5



- Note:
- Location of unit's Name Plate
-Unit body : on the control box cover.
-Decoration panel : on the panel frame at the middle of the inlet.
 - When installing an optional accessory, refer to the installation drawings.
 - When it may exceed 30°C and RH 80% in the ceiling or fresh air is inducted into the ceiling, an additional insulation (Thickness 10mm or more of glasswool or polyethylene foam) is required.
 - Make sure the spacing between the ceiling and the cassette is not more than 35mm.
MAX ceiling opening:310×310.