

PROJECT NAME:

Location:	Approval:
Engineer:	Date:
Submitted to:	Construction:
Submitted by:	Unit #:
Reference:	Drawing #:

FEATURES AND BENEFITS

Compact Multi Flow Ceiling Mounted Cassette

Quiet, Compact, Designed for user comfort

Compact & Elegant Design

Fully-flat integration in standard architectural ceiling tiles, leaving only 8 mm. Remarkable blend of iconic design and engineering excellence with an elegant finish in white.

The newly designed panel integrates fully within one ceiling tile enabling lights, speakers and sprinklers to be installed in the adjoining ceiling tiles.

Efficiency & Comfort

Two optional intelligent sensors improve energy efficiency and comfort. An optional presence and floor sensor kit can be fitted to the cassette for draught prevention, energy-saving operation and to provide optimal control of airflow.

Individual Airflow Direction

Airflow direction can be individually adjusted for each air discharge outlet to deliver optimal air distribution.

Auto swing (up/down)

Possibility to select automatic vertical moving of the air discharge flaps for efficient air and temperature distribution throughout the room.

Ceiling soiling prevention

Prevents air from blowing against the ceiling to prevent ceiling stains.

EXTERNAL APPEARANCE



R-410A

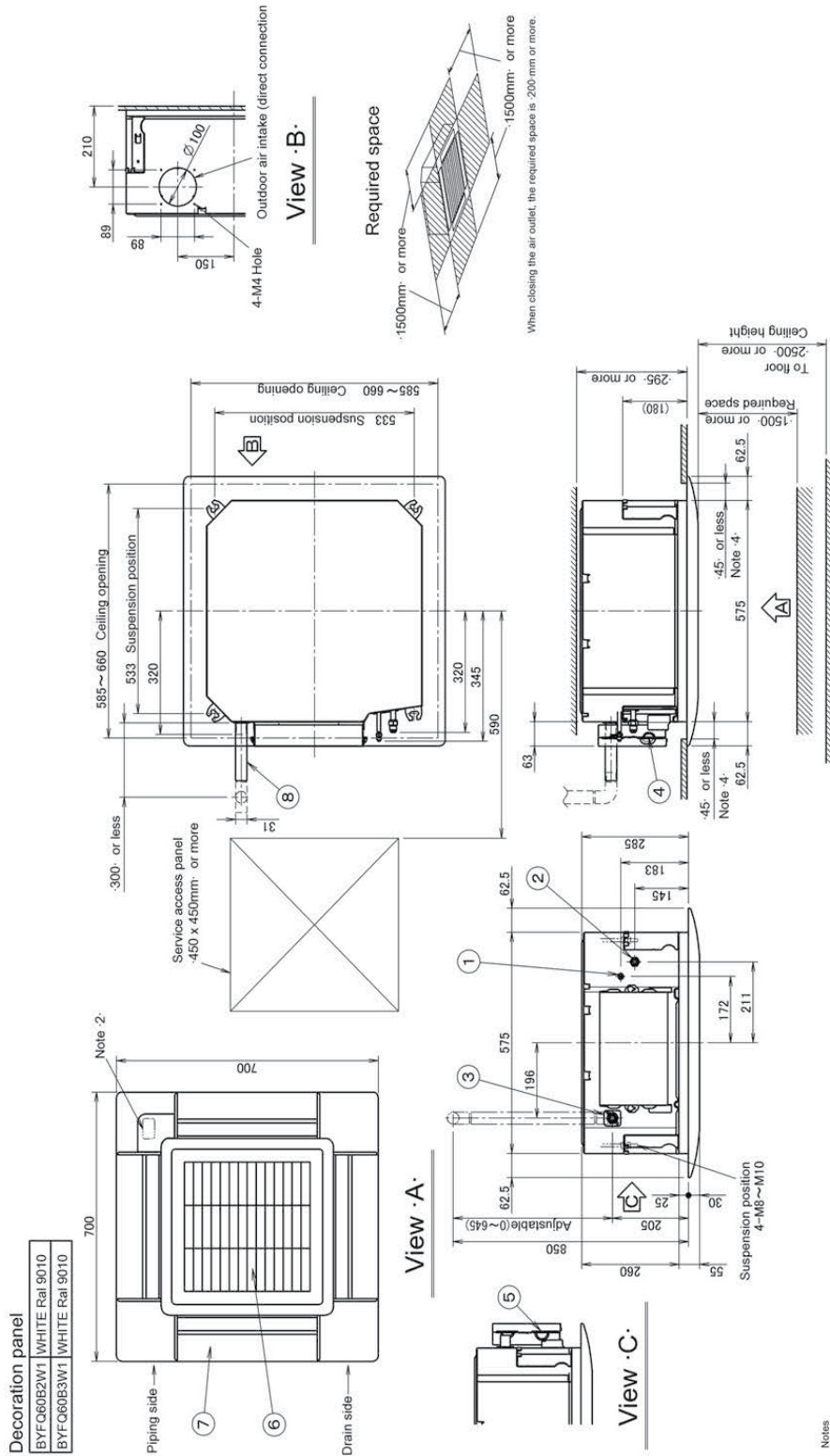
MODEL: COMPACT MULTI FLOW CEILING MOUNTED CASSETTE 50/60 Hz - FXZQ20AVM SPECIFICATIONS

Model		FXZQ20AVM		
*1 Power supply		1 phase, 220-240/220-230 V, 50/60 Hz		
*2 *4 Cooling capacity	kcal/h	1.900		
	Btu/h	7.500		
	kW	2,2		
*3 *4 Heating capacity	kcal/h	2.200		
	Btu/h	8.500		
	kW	2,5		
Power input	Cooling	kW	0,043	
	Heating	kW	0,036	
Casing / Colour		Galvanized steel plate		
*5 Dimensions: (HxWxD)		mm	260x575x575	
Fan	Model		ARW5215DK	
	Type		Turbo fan	
	Motor output x Number of units		W	50x1
	Airflow rate (H/M/L)	m ³ /min		8.7/7.5/6.5
		l/s		145/125/108
		cfm		307/265/229
Drive		Direct drive		
Temperature control		Microprocessor thermostat for cooling and heating		
Sound absorbing thermal insulation material		Foamed polyurethane		
Piping connections	Liquid pipes	mm	φ6.4 (Flare connection)	
	Gas pipes	mm	φ12.7 (Flare connection)	
	Drain pipe	mm	VP20 (External dia. 26) Internal dia. 20	
Mass	kg	15,5		
*6 Sound pressure level (H/M/L)	dB(A)	32.0/29.5/25.5		
Safety devices		Fuse		
Refrigerant control		Electronic expansion valve		
Decoration panels (Option)	Model		BYFQ60CAW	
	*7 Panel colour		White (N9.5)	
	Dimensions: (HxWxD)		mm	46x620x620
	Air filter		Resin net	
	Mass	kg	2,8	
Standard accessories		Installation & Operation manual, Drain hose, Metal clamp for drain hose, Washer for hanger bracket, Screws, Insulation for fitting, Sealing pads, Clamps		
Drawing No.	Specification	C: 3D 128262A		
	Sound level	C: 4D 128515		
Notes: *1. For FXZQ-AVM4 and FXZQ-AV2S, Power supply: 1 phase, 220 V, 50 Hz. *2. Indoor temp.: 27°CDB, 19°CWB / outdoor temp.: 35°CDB / Equivalent piping length: 7.5 m, level difference: 0 m. *3. Indoor temp.: 20°CDB / outdoor temp.: 7°CDB, 6°CWB / Equivalent piping length: 7.5 m, level difference: 0 m. *4. Capacities are net, including a deduction for cooling (an addition for heating) for indoor fan motor heat. *5. Dimensions do not include control box. *6. Anechoic chamber conversion value, measured at a point 1.5 m downward from the unit centre. During actual operation, these values are normally somewhat higher as a result of ambient conditions. *7. Material from maker IRPC(HI650). Refer colour code from limit sample of maker IRPC.				

MODEL: COMPACT MULTI FLOW CEILING MOUNTED CASSETTE 50/60 Hz - FXZQ20AVM

DIMENSIONS

Unit: mm



Item	Part name	Part name
1	Liquid pipe connection - Ø 6.4"	5 Remote control wiring intake
2	Gas pipe connection - Ø 12.7"	6 Air discharge grille
3	Drain outlet - VP20 ⁺	7 Air suction grille
4	Outer: Ø26	8 Drain hose
	Inner: Ø25	

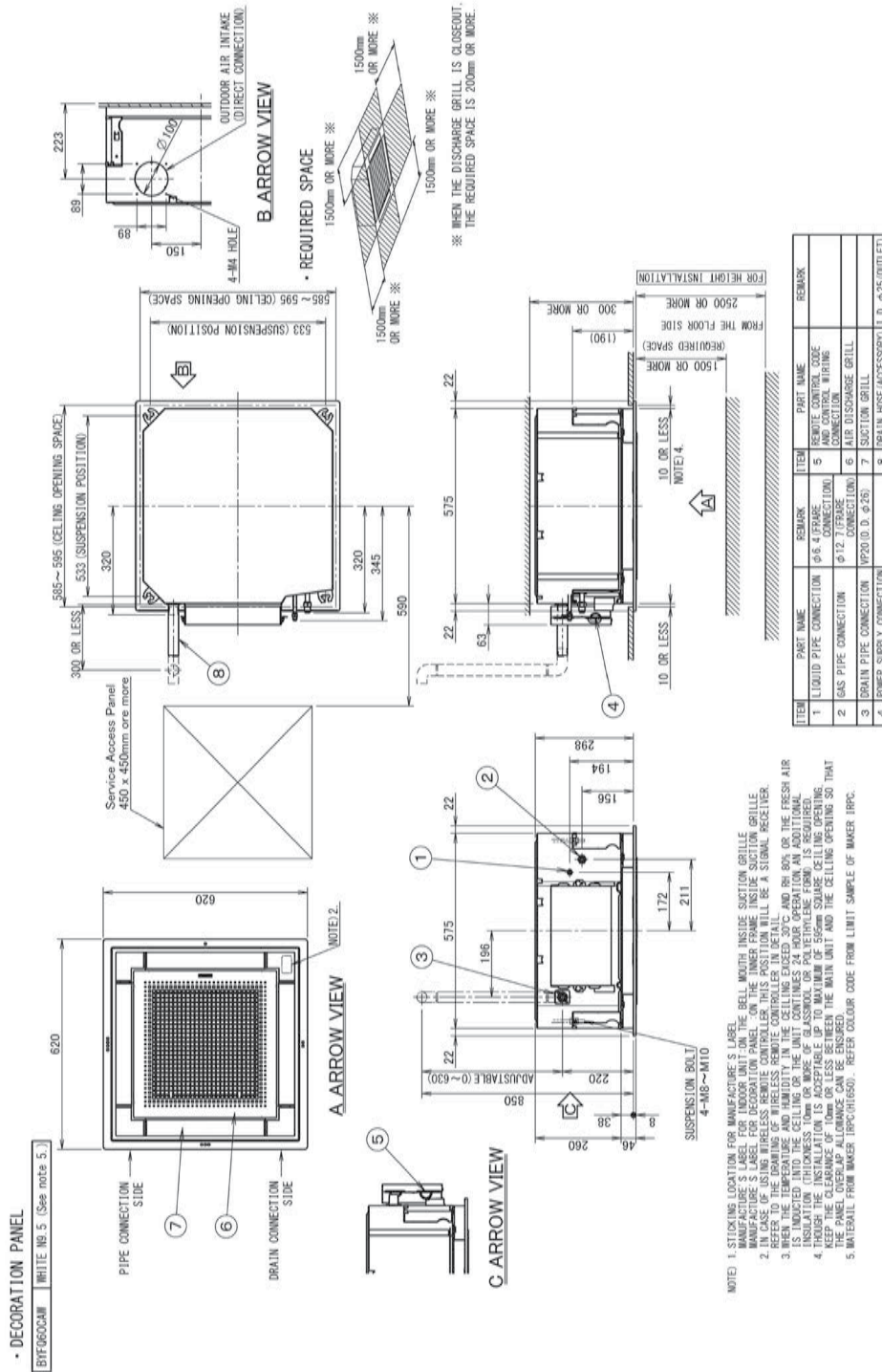
- Notes
1. Location of nameplate
The nameplate is located on the bell mouth inside the suction grille.
The decoration panel nameplate is located on the inner frame inside the suction grille.
 2. When installing a wireless controller, there will be a receiver on this location. For details, see the drawing of the wireless controller.
 3. If any of the following conditions are met, additional insulation (glass wool or polyethylene foam, thickness ≥ 10 mm) is required:
Ambient conditions in the ceiling ≥ -30 °C and 80 % relative humidity.
Fresh air is inducted into the ceiling.
 4. Though the installation is acceptable up to maximum 660 mm square ceiling opening, keep the clearance of 45 mm or less between the indoor unit and the ceiling opening, so that the panel overlap allowance can be ensured.

3D082161C

MODEL: COMPACT MULTI FLOW CEILING MOUNTED CASSETTE 50/60 Hz - FXZQ20AVM

DIMENSIONS

Unit: mm



3D128261