

MODEL: COMPACT MULTI FLOW CEILING MOUNTED CASSETTE 50/60 Hz - FXZQ20BVM

PROJECT NAME:

Location:	Approval:
Engineer:	Date:
Submitted to:	Construction:
Submitted by:	Unit #:
Reference:	Drawing #:

FEATURES AND BENEFITS

Compact Multi Flow Ceiling Mounted Cassette
Quiet, Compact, Designed for user comfort

Compact & Elegant Design

Fully-flat integration in standard architectural ceiling tiles, leaving only 8 mm. Remarkable blend of iconic design and engineering excellence with an elegant finish in white.

The newly designed panel integrates fully within one ceiling tile enabling lights, speakers and sprinklers to be installed in the adjoining ceiling tiles.

Efficiency & Comfort

Two optional intelligent sensors improve energy efficiency and comfort. An optional presence and floor sensor kit can be fitted to the cassette for draught prevention, energy-saving operation and to provide optimal control of airflow.

Individual Airflow Direction

Airflow direction can be individually adjusted for each air discharge outlet to deliver optimal air distribution.

Auto swing (up/down)

Possibility to select automatic vertical moving of the air discharge flaps for efficient air and temperature distribution throughout the room.

Ceiling soiling prevention

Prevents air from blowing against the ceiling to prevent ceiling stains.

EXTERNAL APPEARANCE



R-410A

SPECIFICATIONS

Model			FXZQ20BVM
*1 Power supply			1 phase, 220-240/220-230 V, 50/60 Hz
*2 *4 Cooling capacity		kcal/h	1,900
		Btu/h	7,500
		kW	2.2
*3 *4 Heating capacity		kcal/h	2,200
		Btu/h	8,500
		kW	2.5
Power input	Cooling	kW	0.043
	Heating	kW	0.036
Casing / Colour			Galvanized steel plate
*5 Dimensions: (H×W×D)			mm
Fan	Model		ARW5215DK
	Type		Turbo fan
	Motor output × Number of units	W	50×1
	Airflow rate (H/M/L)	m ³ /min	8.7/7.5/6.5
		l/s	145/125/108
		cfm	307/265/229
Drive		Direct drive	
Temperature control			Microprocessor thermostat for cooling and heating
Sound absorbing thermal insulation material			Foamed polyurethane
Piping connections	Liquid pipes	mm	φ6.4 (Flare connection)
	Gas pipes	mm	φ12.7 (Flare connection)
	Drain pipe	mm	VP20 (External dia. 26) Internal dia. 20
Mass		kg	15.5
*6 Sound pressure level (H/M/L)			dB(A)
Safety devices			Fuse
Refrigerant control			Electronic expansion valve
Decoration panels (Option)	Model		BYFQ60CAW
	*7 Panel colour		White (N9.5)
	Dimensions: (H×W×D)	mm	46×620×620
	Air filter		Resin net
	Mass	kg	2.8
Standard accessories			Installation & Operation manual, Drain hose, Metal clamp for drain hose, Washer for hanger bracket, Screws, Insulation for fitting, Sealing pads, Clamps
Drawing No.	Specification		C: 3D143730
	Sound level		C: 4D128516

Notes:

- *1. For FXZQ-BV2S, Power supply: 1 phase, 220 V, 50 Hz.
- *2. Indoor temp.: 27°CDB, 19°CWB / outdoor temp.: 35°CDB / Equivalent piping length: 7.5 m, level difference: 0 m.
- *3. Indoor temp.: 20°CDB / outdoor temp.: 7°CDB, 6°CWB / Equivalent piping length: 7.5 m, level difference: 0 m.
- *4. Capacities are net, including a deduction for cooling (an addition for heating) for indoor fan motor heat.
- *5. Dimensions do not include control box.
- *6. Anechoic chamber conversion value, measured at a point 1.5 m downward from the unit centre. During actual operation, these values are normally somewhat higher as a result of ambient conditions.
- *7. Material from maker IRPC(HI650). Refer colour code from limit sample of maker IRPC.

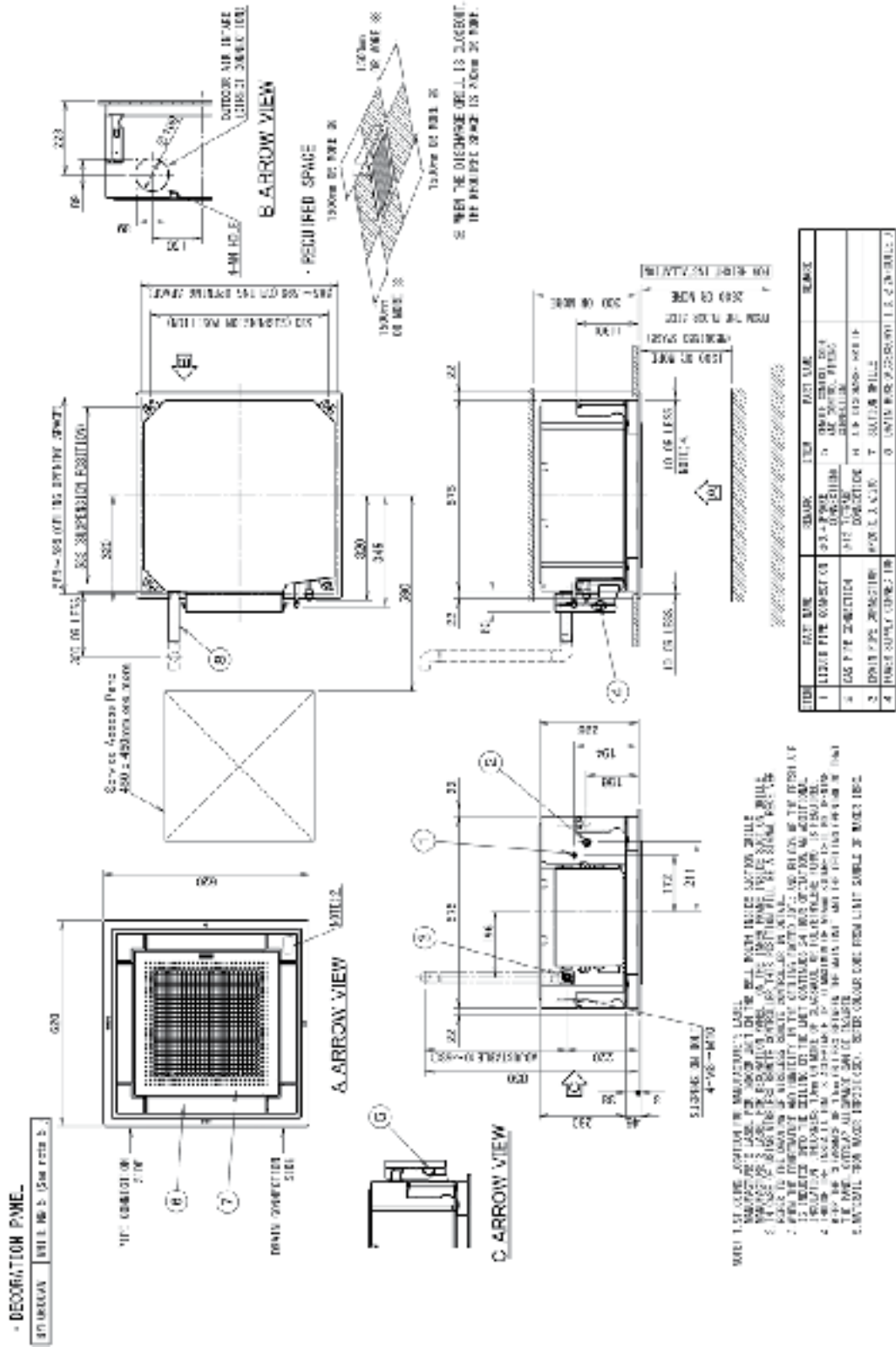
Conversion formulae

kcal/h=kW×860 Btu/h=kW×3412 l/s=m³/min×1000/60 cfm=m³/min×35.3

MODEL: COMPACT MULTI FLOW CEILING MOUNTED CASSETTE 50/60 Hz - FXZQ20BVM

DIMENSIONS GRID CEILING PANEL

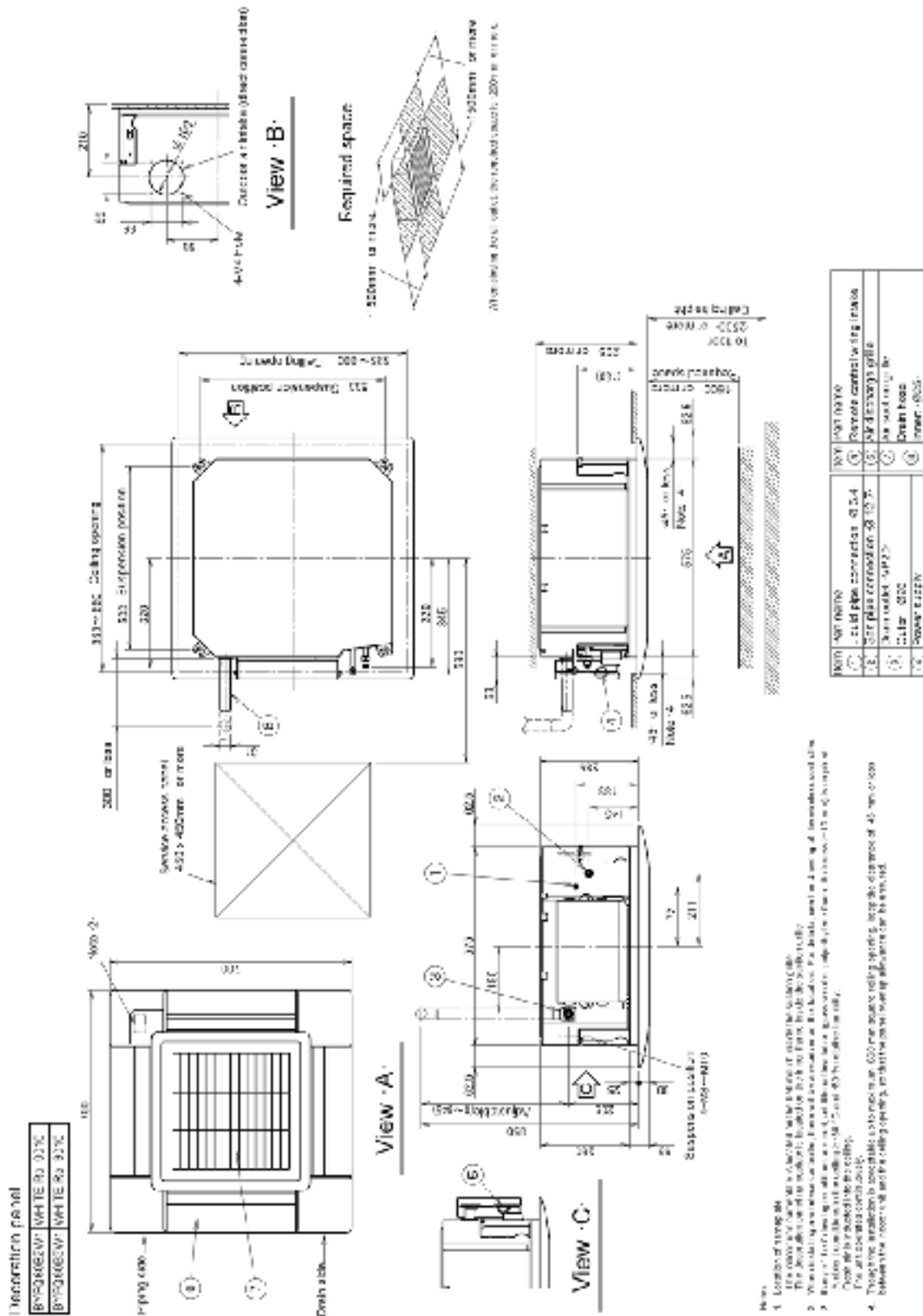
Unit: mm



3D128261A

DIMENSIONS DECORATION PANEL

Unit: mm



3D082161D